

Investing In Your Community



Consumers Bancorp, Inc.
2009 ANNUAL REPORT

Financial Highlights

Dollar amounts in thousands, except per share data

	June 30, 2009	June 30, 2008
ASSETS:		
Total cash and cash equivalents	\$ 18,891	\$ 10,962
Certificate of deposits in financial institutions	2,012	—
Securities, available-for-sale	60,775	59,212
Federal bank and other restricted stocks, at cost	1,186	1,173
Total loans	160,141	152,350
Less allowance for loan losses	(1,992)	(1,709)
Net loans	158,149	150,641
Other assets	10,849	11,089
Total assets	<u>\$ 251,862</u>	<u>\$ 233,077</u>
LIABILITIES:		
Deposits:		
Non-interest bearing demand	\$ 42,855	\$ 44,480
Interest bearing demand	12,570	13,298
Savings	58,196	52,490
Time	90,430	78,576
Total deposits	204,051	188,844
Short-term borrowings	15,055	11,892
Federal Home Loan Bank advances	9,373	10,601
Other liabilities	1,922	2,169
Total liabilities	230,401	213,506
SHAREHOLDERS' EQUITY:		
Total shareholders' equity	21,461	19,571
Total liabilities and shareholders' equity	<u>\$ 251,862</u>	<u>\$ 233,077</u>
Cash dividends paid per share	\$ 0.40	\$ 0.34
Weighted average number of shares outstanding	2,029,558	2,043,489
NET INCOME:		
Interest income	\$ 13,100	\$ 13,478
Interest expense	3,553	4,628
Net interest income	9,547	8,850
Provision for loan losses	579	430
Net interest income after provision for loan losses	8,968	8,420
Other income	2,615	2,468
Other expense	8,987	8,592
Income before income taxes	2,596	2,296
Income taxes	569	493
Net income	<u>\$ 2,027</u>	<u>\$ 1,803</u>
Basic earnings per share	\$ 1.00	\$ 0.88

Please refer to the annual report on Form 10-K for additional financial information.

“Consumers Bancorp, Inc. realized an increase of over 12% from prior year net income, and our loan balances grew over 5% in the twelve months ending June 30.”



Dear Shareholders,

At the beginning of the past year, most of the economic concern was centered on the failures of subprime and predatory lending policies and their impact on some renegade financial institutions and the housing market. As the year progressed, the true impact of these practices and other exotic financial transactions on the world's financial system became more evident. Since last fall, you have heard reports about Troubled Asset Relief Program (TARP), frozen credit markets, stimulus programs, the collapse of Lehman Brothers and the stock market, bank failures, and rising unemployment. We have witnessed massive government bailouts of banks, insurance companies, investment firms, and auto manufacturers. While we are all affected by this unprecedented environment, I want to address some of the myths that have developed during this crisis.

Most banks did not participate in the government bailout program. Proud of its independence, the leadership of Consumers National Bank did not accept the concept of government intervention and bailouts. Like most community banks, your Bank did not require federal assistance to remain well capitalized. The decision not to accept TARP funds has allowed us to operate safely without additional government imposed restrictions. As banks rush to get out of the program, it is clear that the independent instincts of your leadership team were correct.

As this report also reveals, some banks continue to perform well. Consumers Bancorp, Inc. realized an increase of over 12% from prior year net income. Asset growth and expense control helped the Bank overcome a 720% increase in Federal Deposit Insurance Corporation premiums and special assessments disproportionately assessed to all insured institutions, regardless of their financial strength. Although burdensome, the additional premiums and assessments were necessary to maintain confidence in the banking system. Although we expect higher premiums to continue for all institutions, we are working with industry representatives to secure a more equitable risk-based approach to future assessments.

The unavailability of credit has been widely reported as both a cause and effect of the issues discussed above. For the most part, this commentary does not apply to community banks who provide 35% of loans to small businesses, the type of lending that our local economy and the country will need to recover. Since the credit crises began in late 2007, Consumers National Bank has made nearly \$70 million dollars in new loans to small businesses, farmers, and individuals in Carroll, Columbiana, and Stark counties. In the twelve months ending June 30, our loan balances grew over 5%. We are proud to help our customers prepare for the future and will continue to lend to qualified borrowers.


Consumers National Bank also dispels the myth that technology and diverse product offerings are monopolized by the mega banks. Our strategic directive is to provide our customers with accessibility to decision makers and to their financial information. To that end, we continue to invest in staff and technology. We have strengthened our lending function by appointing Phil Suarez to a newly created Chief Credit Officer position and have added Larry Marcus to our management team as Senior Lender. These moves will enhance our risk management practices and will make us more responsive to customer needs. Over the past year we have also made investments to provide our customers with updated internet banking and cash management capabilities, e-Courier electronic deposit, mobile banking, and electronic check collection services. We have the staff, infrastructure, and commitment to aggressively provide a full range of financial products and state-of-the-art technology.

As you have noticed from our quarterly mailings, corporate bank dividends are not dead. Our earnings have allowed us to maintain a quarterly dividend payout of \$0.10 per share. Additionally, I am happy to report that the September 2009 dividend marked the first time our shareholders had the opportunity to participate in a dividend reinvestment and stock purchase plan. Shareholder support of the Corporation through participation in this plan is encouraging.

As a company and community, we will continue to experience a period of weakened economic activity. The recovery will be slow and the business environment will fundamentally change. I believe the economic turmoil experienced over the past two years proves there is a need and a place for community banks in the financial marketplace. I am confident that our Company has the foundation and commitment to emerge from this period as an even stronger financial institution.

Consumers Bancorp, Inc. is made up of 111 employees and nine directors who are committed to the community bank business model. They have made the results depicted in this report possible, and I thank each of them for the dedication and support they have shown over the past year. I also thank each shareholder for their continued support of community-based banking. Your investment in Consumers Bancorp, Inc. enables us to invest in the local community.

I look forward to seeing you at the Shareholders' Meeting and Breakfast, which will be held at 9 a.m. on Wednesday, October 28, 2009, at the Great Trail Tee House in Minerva.

Sincerely, 

"Since the credit crisis began in late 2007, Consumers National Bank has made nearly \$70 million dollars in new loans to small businesses, farmers, and individuals in Carroll, Columbiana, and Stark counties."



Ralph J. Lober, II
President
Chief Executive Officer



How We Invest In The Community

The national economic situation that was in crisis a year ago has moved into recovery but continues to pose challenges for the individuals and businesses in our communities. While mega banks drastically reduced lending and were bought out or merged to avoid failure, one particular segment of the banking industry remained safe, secure, and strong—independent community banks. Consumers National Bank is proud to be part of the latter group. We remained well-capitalized and continued to make loans to creditworthy people and businesses through these difficult times.

Consumers National Bank Weathered The Storm

Simply stated, Consumers National Bank remained focused on local community banking. We convert local

deposits into local loans for families, businesses, and farms in our communities, not in speculative markets outside our market area. One example of this is our relationship with Grace Baptist Church in Stark County. The loan enabled the church to start Phase I of its three phase construction project beginning with the addition of a new wing housing educational classrooms, choir room and open courtyard, plus renovation of the existing sanctuary, relocation of the nursery, preschool rooms and offices, and additional upgrades. Consumers National Bank provided the financing that helped the congregation fulfill its vision.

In Columbiana County, Consumers National Bank helped Sluss Farms enlarge its family farm. Sluss Farms added 60,000 square

feet to their poultry operations, more than doubling their previous yield. When we make loans to local organizations like Grace Baptist Church and local busi-

nesses like Sluss Farms, the funds benefit a variety of local vendors, suppliers, and trade people who are hired to complete the projects. Serving these customers keeps money in our local economy and stimulates employment.

A Credit Culture That Reflects Our Community

Consumers National Bank maintains high credit standards based on our community banking philosophy. Unlike mega banks that use local deposits to fund loans and investments outside their markets, we put our customers' deposits to work right here in Carroll, Columbiana, Stark and contiguous Ohio counties. We have built a credit culture based on conservative credit standards. Our loan portfolio is managed by a team of experienced credit analysts and commercial lenders led by Phil Suarez and Larry Marcus. We recently strengthened our credit department by appointing Phil to the new position of Senior Credit Officer.

Local community banks like Consumers National Bank know their customers and understand local economic conditions. Local businesses prefer to borrow from local banks because the business owners know that they can speak to the bank's decision makers who are visible in the community and accessible.

Accessible People Who Can Answer Your Questions

Whether borrowing or depositing money, customers want to have access to people who can answer their questions. At Consumers National Bank, we strive to provide exceptional customer service by making customer account information and our employees accessible to our customers in a variety of ways.

We recently realigned our credit and loan departments to enhance customer service by significantly improving access to our lending team, and we strengthened our commitment to the agriculture community by appointing a dedicated agriculture lender to our team.

Each one of our ten community offices is managed by an experienced staff that is familiar with the area and the local needs of their customers. Every office has a drive-thru teller window and a drive-up ATM that is available 24 hours a day, seven days a week for our customers' convenience. Our staff can assist with vir-

“Community banks provide 35% of the total dollar amount of loans to small businesses under one million dollars.”
—Small Business Administration



Members of Grace Baptist Church at the ground-breaking ceremony in 2009.



Agriculture loans are an important part of our business.

tually any financial need that our customers may have, from personal and business deposit accounts to loans and retirement accounts. In addition, Consumers National Bank has a relationship with CNB Investment Services including a full-time financial investment advisor on site.

Through our qualified banking staff, relationship with CNB Investment Services, and full range of financial accounts and services, Consumers National Bank has laid to rest the myth that “bigger is better” in banking.

Committed To Providing The Latest Technology

The world has become a place of constant connectivity via the internet either through laptop computers,



Consumers Mobile Connect keeps customers connected to their account information.

iPhones, Blackberries, or other mobile devices. While some people prefer to do their banking in person, more customers are demanding the ability to check their accounts online, transfer money electronically, and receive account alerts on their cell phones. Consumers National Bank is com-

mitted to providing customers with access to their accounts electronically. We have met and will continue to meet these demands.

While our customers have enjoyed telephone banking, internet banking, and online bill payment for years, we continue to enhance our electronic offerings. Consumers Mobile Connect now enables customers to access



With e-Courier, customers save a trip to the bank and deposit checks into their accounts at their leisure.

their accounts, transfer funds, and set up and receive account alerts on a mobile device. Today our business customers can scan and instantly deposit checks directly from their own office with our e-Courier Remote Deposit service. Customers will be able to

open and fund a deposit account online through a secure online account opening portal.

At Consumers National Bank, we want to provide each customer with the level of accessibility that he or she

prefers. We monitor technological advancements and move aggressively to meet our customers' goals. We are providing state-of-the-art services today that many people believe can only be found at much larger banks.

County Fairs, Bake Sales, And Walkathons

Rarely a week goes by when Consumers National Bank is not placing an ad in a local high school sports program or yearbook, hosting a bake sale, or contributing to a community initiative. As a community bank, we are proud to support the dozens of schools, clubs, and charitable organizations that contribute to the quality of life in our neighborhoods. Consumers National Bank has purchased Grand Reserve Champion steer at local county fairs, provided floats in community parades, manned booths at balloon lift-offs, and much more. Our employees volunteer in organizations ranging from local chambers of commerce and the Mayor's Economic Advisory Board to Big Brothers/Big Sisters, Junior Achievement, and Habitat for Humanity. As a community bank and one of the area's largest employers, we feel it is our duty to support the communities we draw on for business.

Without community banks such as Consumers National Bank, our communities and our economy would look much different. Community banks fill the need for a reliable, secure, local banking institution that is focused on the financial needs of the families, businesses, and farms in the local community. The 111 employees and nine directors of Consumers National Bank are proud to have the privilege to assist the families and businesses in the northeastern Ohio communities we serve.

“Community banks are themselves small businesses, so they understand the needs of small business owners.”

Without community banks such as Consumers National Bank, our communities and our economy would look much different. Community banks fill the need for a reliable, secure, local banking institution that is

focused on the financial needs of the families, businesses, and farms in the local community. The 111 employees and nine directors of Consumers National Bank are proud to have the privilege to assist the families and businesses in the northeastern Ohio communities we serve.



Consumers National Bank employees volunteer at a variety of local charitable organizations.

Board of Directors



Clockwise from left: John Tonti, John Furey, James Hanna, Ralph J. Lober, II, Laurie McClellan (Chairman of the Board), Harry Schmuck, Jr., James Kiko, Sr., Thomas Kishman, David Johnson.

“Community bank Boards of Directors are made up of local citizens who want to advance the interests of the towns and cities where they live and where the bank does business.”

Executive Management



Left to right: Ralph J. Lober, II, President & CEO; Rebecca Geis, Vice President, Deposit Operations; Larry Marcus, Senior Vice President, Lending; Renee Wood, Chief Financial Officer; Phillip Suarez, Senior Vice President, Chief Credit Officer; Paul Hugenberg, III, Chief Information Officer. Not pictured: Stormie Gross, Vice President, Risk Management and Compliance Officer.

UNITED STATES
SECURITIES AND EXCHANGE COMMISSION
WASHINGTON, D.C. 20549

FORM 10-K

(Mark one)

Annual Report Pursuant to Section 13 or 15(d) of the Securities Exchange Act of 1934
For the fiscal year ended June 30, 2009

OR

Transition Report Pursuant to Section 13 or 15(d) of the Securities Exchange Act of 1934
For the transition period from _____ to _____

Commission File No. 033-79130

CONSUMERS BANCORP, INC.

(Exact name of registrant as specified in its charter)

OHIO
(State or other jurisdiction of
incorporation or organization)

34-1771400
(I.R.S. Employer
Identification No.)

614 East Lincoln Way,
P.O. Box 256, Minerva, Ohio 44657
(330) 868-7701

(Address, including zip code, and telephone number, including area code, of registrant's principal executive offices)

Securities registered pursuant Section 12(b) of the Act: None

Securities registered pursuant Section 12(g) of the Act: Common Shares, no par value

Indicate by check mark if the registrant is a well-known seasoned issuer, as defined in Rule 405 of the Securities Act.

Yes No

Indicate by check mark if the registrant is not required to file reports pursuant to Section 13 or Section 15(d) of the Act.

Yes No

Indicate by check mark whether the registrant (1) has filed all reports required to be filed by Section 13 or 15(d) of the Securities Exchange Act of 1934 during the preceding 12 months (or for such shorter period that the registrant was required to file such reports), and (2) has been subject to such filing requirements for the past 90 days. Yes No

Indicate by check mark whether the registrant has submitted electronically and posted on its corporate Web site, if any, every Interactive Data File required to be submitted and posted pursuant to Rule 405 of Regulation S-T (§ 229.405 of this chapter) during the preceding 12 months (or for such shorter period that the registrant was required to submit and post such files). Yes No

Indicate by check mark if disclosure of delinquent filers pursuant to Item 405 of Regulation S-K (§ 229.405 of this chapter) is not contained herein, and will not be contained, to the best of registrant's knowledge, in definitive proxy or information statements incorporated by reference in Part III of this Form 10-K or any amendment to this Form 10-K.

Indicate by check mark whether the registrant is a large accelerated filer, an accelerated filer, a non-accelerated filer, or a smaller reporting company. See the definitions of "large accelerated filer," "accelerated filer" and "smaller reporting company" in Rule 12b-2 of the Exchange Act. (Check one):

Large accelerated filer Accelerated filer Non-accelerated filer Smaller reporting company
(Do not check if small reporting company)

Indicate by check mark whether the registrant is a shell company (as defined in Rule 12b-2 of the Act). Yes No

Based on the closing sales price on December 31, 2008, the aggregate market value of the voting stock held by non-affiliates of the Registrant was approximately \$16,509,481.

The number of shares outstanding of the Registrant's common stock, without par value was 2,029,558 at September 1, 2009.

DOCUMENTS INCORPORATED BY REFERENCE

Certain specifically designated portions of Consumers Bancorp, Inc.'s definitive Proxy Statement dated September 23, 2009 for its 2009 Annual Meeting of Shareholders are incorporated by reference into Part III of this Form 10-K.

TABLE OF CONTENTS

PART I

ITEM 1—BUSINESS	3
ITEM 2—PROPERTIES	6
ITEM 3—LEGAL PROCEEDINGS	6
ITEM 4—SUBMISSION OF MATTERS TO A VOTE OF SECURITY HOLDERS	6

PART II

ITEM 5—MARKET FOR REGISTRANT’S COMMON EQUITY, RELATED SHAREHOLDER MATTERS AND ISSUER PURCHASES OF EQUITY SECURITIES	7
ITEM 6—SELECTED FINANCIAL DATA	8
ITEM 7—MANAGEMENT’S DISCUSSION AND ANALYSIS OF FINANCIAL CONDITION AND RESULTS OF OPERATIONS	9
ITEM 8—FINANCIAL STATEMENTS AND SUPPLEMENTARY DATA	21
ITEM 9—CHANGES IN AND DISAGREEMENTS WITH ACCOUNTANTS ON ACCOUNTING AND FINANCIAL DISCLOSURE	46
ITEM 9A(T)—CONTROLS AND PROCEDURES	46
ITEM 9B—OTHER INFORMATION	46

PART III

ITEM 10—DIRECTORS, EXECUTIVE OFFICERS AND CORPORATE GOVERNANCE	47
ITEM 11—EXECUTIVE COMPENSATION	47
ITEM 12—SECURITY OWNERSHIP OF CERTAIN BENEFICIAL OWNERS AND MANAGEMENT AND RELATED STOCKHOLDER MATTERS	47
ITEM 13—CERTAIN RELATIONSHIPS AND RELATED TRANSACTIONS, AND DIRECTOR INDEPENDENCE	47
ITEM 14—PRINCIPAL ACCOUNTING FEES AND SERVICES	47

PART IV

ITEM 15—EXHIBITS, FINANCIAL STATEMENT SCHEDULES	47
SIGNATURES	49

Index to Exhibits

EX 21 Subsidiaries of Consumers Bancorp, Inc.	
EX 23 Consent of Crowe Horwath LLP	
EX 31.1 Section 302 Certification of Chief Executive Officer	
EX 31.2 Section 302 Certification of Chief Financial Officer	
EX 32.1 Section 906 Certification of Chief Executive Officer and Chief Financial Officer	

PART I

ITEM 1—BUSINESS

Business

Consumers Bancorp, Inc. (Corporation), is a bank holding company under the Bank Holding Company Act of 1956, as amended and is a registered bank holding company, incorporated under the laws of the State of Ohio. In February 1995, the Corporation acquired all the issued and outstanding capital stock of Consumers National Bank (Bank), a bank chartered under the laws of the United States of America. The Corporation's activities have been limited primarily to holding the common stock of the Bank.

Since 1965, the Bank's main office has been serving the Minerva, Ohio area from its location at 614 East Lincoln Way, Minerva, Ohio. The Bank's business involves attracting deposits from businesses and individual customers and using such deposits to originate commercial, mortgage and consumer loans in its market area, consisting primarily of Stark, Columbiana, Carroll and contiguous counties in Ohio. The Bank also invests in securities consisting primarily of obligations of U.S. government sponsored entities, municipal obligations and mortgage-backed securities issued by Fannie Mae and Freddie Mac.

Supervision and Regulation

The Corporation is supervised by the Board of Governors of the Federal Reserve System (Federal Reserve Board) and the Bank is subject to supervision, regulation and periodic examination by the Office of the Comptroller of the Currency (OCC). Earnings of the Corporation are affected by state and federal laws and regulations and by policies of various regulatory authorities. Changes in applicable law or in the policies of various regulatory authorities could affect materially the business and prospects of the Corporation and the Bank. The following discussion of supervision and regulation is qualified in its entirety by reference to the statutory and regulatory provisions discussed.

Regulation of the Corporation:

The Bank Holding Company Act: As a bank holding company, the Corporation is subject to regulation under the Bank Holding Company Act of 1956, as amended (BHCA) and the examination and reporting requirements of the Board of Governors of the Federal Reserve System (Federal Reserve Board). Under the BHCA, the Corporation is subject to periodic examination by the Federal Reserve Board and required to file periodic reports regarding its operations and any additional information that the Federal Reserve Board may require.

The BHCA generally limits the activities of a bank holding company to banking, managing or controlling banks, furnishing services to or performing services for its subsidiaries and engaging in any other activities that the Federal Reserve Board has determined to be so closely related to banking or to managing or controlling banks as to be a proper incident to those activities. In addition, the BHCA requires every bank holding company to obtain the approval of the Federal Reserve Board prior to acquiring substantially all the assets of any bank, acquiring direct or indirect ownership or control of more than 5% of the voting shares of a bank or merging or consolidating with another bank holding company.

Privacy Provisions of Gramm-Leach-Bliley Act: The Gramm-Leach-Bliley Act of 1999 contains extensive provisions on a customer's right to privacy of non-public personal information. Under these provisions, a financial institution must provide to its customers the institution's policies and procedures regarding the handling of customers' non-public personal information. Except in certain cases, an institution may not provide personal information to unaffiliated third parties unless the institution discloses that such information may be disclosed and the customer is given the opportunity to opt out of such disclosure. The Corporation and the Bank are also subject to certain state laws that deal with the use and distribution of non-public personal information.

Sarbanes-Oxley Act: The Sarbanes-Oxley Act of 2002 contains important requirements for public companies in the area of financial disclosure and corporate governance. In accordance with section 302(a) of the Sarbanes-Oxley Act, written certifications by the Corporation's Chief Executive Officer and Chief Financial Officer are required. These certifications attest that the Corporation's quarterly and annual reports filed with the SEC do not contain any untrue statement of a material fact or omit to state a material fact.

Regulation of the Bank:

As a national bank, Consumers National Bank is subject to regulation, supervision and examination by the OCC and by the Federal Deposit Insurance Corporation (FDIC). These examinations are designed primarily for the protection of the depositors of the Bank.

Dividend Restrictions: Dividends from the Bank are the primary source of funds for payment of dividends to our shareholders. However, there are statutory limits on the amount of dividends the Bank can pay without regulatory approval. Under regulations promulgated by the OCC, the Bank may not declare a dividend in excess of its undivided profits. Additionally, the Bank may not declare a dividend if the total amount of all dividends, including the proposed dividend, declared by the Bank in any calendar year exceeds the total of its retained net income of that year to date, combined with its retained net income of the two preceding years, unless the dividend is approved by the OCC. The Bank may not declare or pay any dividend if, after making the dividend, the Bank would be “undercapitalized,” as defined in the federal regulations.

FDIC: The FDIC is an independent federal agency, which insures the deposits of federally insured banks and savings associations up to certain prescribed limits and safeguards the safety and soundness of financial institutions. The deposits of the Bank are subject to the deposit insurance assessments of the Bank Insurance Fund of the FDIC. Under the FDIC’s deposit insurance assessment system, the assessment rate for any insured institutions varies according to regulatory capital levels of the institution and other factors such as supervisory evaluations.

The FDIC is authorized to prohibit any insured institution from engaging in any activity that poses a serious threat to the insurance fund and may initiate enforcement actions against banks, after first giving the institution’s primary regulatory authority an opportunity to take such action. The FDIC may also terminate the deposit insurance of any institution that has engaged in or is engaging in unsafe or unsound practices, is in an unsafe or unsound condition to continue operations or has violated any applicable law, order or condition imposed by the FDIC.

FHLB: The Bank is also a member of the Federal Home Loan Bank of Cincinnati (FHLB), which is a privately capitalized, government sponsored enterprise that expands housing and economic development opportunities throughout the nation by providing loans and other banking services to community-based financial institutions.

Risk-Based Capital Requirements: The Federal Reserve Board and the OCC employ similar risk-based capital guidelines in their examination and regulation of bank holding companies and national banks. As of the fiscal year-end 2009, the Corporation met the definition of a Small Bank Holding Company and, therefore was exempt from consolidated risk-based and coverage capital adequacy guidelines for bank holding companies. The guidelines involve a process of assigning various risk weights to different classes of assets, then evaluating the sum of the risk-weighted balance sheet structure against the capital base. If capital falls below the minimum levels established by the guidelines, the bank holding company or bank may be denied approval to acquire or establish additional banks or non-bank businesses or to open new facilities. In addition, failure to satisfy capital guidelines could subject a banking institution to a variety of enforcement actions by federal bank regulatory authorities, including the termination of deposit insurance by the FDIC and a prohibition on the acceptance of “brokered deposits.”

Under regulations adopted under these provisions, for an institution to be well capitalized it must have a total risk-based capital ratio of at least 10%, a Tier I risk-based capital ratio of at least 6% and a Tier I leverage ratio of at least 5% and not be subject to any specific capital order or directive. The OCC and the FDIC may take various corrective actions against any undercapitalized bank and any bank that fails to submit an acceptable capital restoration plan or fails to implement a plan accepted by the OCC or the FDIC. These powers include, but are not limited to, requiring the institution to be recapitalized, prohibiting asset growth, restricting interest rates paid, requiring prior approval of capital distributions by any bank holding company that controls the institution, requiring divestiture by the institution of its subsidiaries or by the holding company of the institution itself, requiring new election of directors, and requiring the dismissal of directors and officers. The OCC’s final supervisory judgment concerning an institution’s capital adequacy could differ significantly from the conclusions that might be derived from the absolute level of an institution’s risk-based capital ratios. Therefore, institutions generally are expected to maintain risk-based capital ratios that exceed the minimum ratios. At June 30, 2009, the Bank was in compliance with all regulatory capital requirements.

Interstate Banking and Branching: The Interstate Banking and Branch Efficiency Act of 1995 has eased restrictions on interstate expansion and consolidation of banking operations by, among other things: (i) permitting interstate bank acquisitions regardless of host state laws, (ii) permitting interstate merger of banks unless specific states have opted out of this provision and (iii) permitting banks to establish new branches outside the state provided the law of the host state specifically allows interstate bank branching.

Community Reinvestment Act: The Community Reinvestment Act requires depository institutions to assist in meeting the credit needs of their market areas, including low and moderate-income areas, consistent with safe and sound banking practices. Under this Act, each institution is required to adopt a statement for each of its market areas describing the depository institution’s efforts to assist in its community’s credit needs. Depository institutions are periodically examined for compliance and assigned ratings. Banking regulators consider these ratings when considering approval of a proposed transaction by an institution.

USA Patriot Act: In 2001, Congress enacted the Uniting and Strengthening America by Providing Appropriate Tools Required to Intercept and Obstruct Terrorism (USA Patriot Act) Act of 2001 (Patriot Act). The Patriot Act is designed to deny terrorists and criminals the ability to obtain access to the United States’ financial system and has significant implications for depository institutions, brokers, dealers, and other businesses involved in the transfer of money. The Patriot Act mandates financial services companies to implement additional policies and procedures with respect to additional measures designed to address any or all of the following matters: money laundering, terrorist financing, identifying and reporting suspicious activities and currency transactions, and currency crimes.

Employees

As of June 30, 2009, the Bank employed 90 full-time and 20 part-time employees. None of the employees are represented by a collective bargaining group. Management considers its relations with employees to be good.

Statistical Disclosure

The following statistical information is included on the indicated pages of this Report:

Average Consolidated Balance Sheet And Net Interest Margin	10
Interest Rates and Interest Differential.....	11
Carrying Values Of Securities.....	13
Maturities And Weighted-Average Yield Of Securities.....	14
Loan Types.....	15
Selected Loan Maturities And Interest Sensitivity	15
Non-accrual, Past Due And Restructured Loans And Other Nonperforming Assets	16
Potential Problem Loans	16
Summary Of Loan Loss Experience	16
Allocation Of Allowance For Loan Losses	17
Average Amount And Average Rate Paid On Deposits	17
Time Deposits Of \$100,000 Or More	17
Short-Term Borrowings	17 and 37
Selected Consolidated Financial Data.....	8

Available Information

The Corporation files annual, quarterly, and current reports, proxy statements, and other information with the SEC. These filings are available to the public over the Internet at the SEC’s web site at www.sec.gov. Shareholders may also read and copy any document that the Corporation files at the SEC’s public reference room located at 450 Fifth Street, NW, Washington, DC 20549. Shareholders may call the SEC at 1-800-SEC-0330 for further information on the public reference room.

Shareholders may request a copy of any of the Corporation’s filings at no cost by writing or e-mailing the Corporation at the following address or e-mail address: Consumers Bancorp, Inc., Attn: Theresa J. Linder, 614 East Lincoln Way, Minerva, Ohio 44657 or e-mail to shareholderrelations@consumersbank.com.

The Corporation’s Code of Ethics Policy, which is applicable to all directors, officers and employees of the corporation, and its Code of Ethics for Principal Financial Officers, which is applicable to the principal executive officer and the principal financial officer, are each available on the Investor Relations section under Required Disclosures of the Corporation’s website (www.consumersbancorp.com). Copies of either of the Code of Ethics Policies are also available in print to shareholders upon request, addressed to the Corporate Secretary at Consumers Bancorp, Inc., 614 East Lincoln Way, Minerva, Ohio 44657. The Corporation intends to post amendments to or waivers from its Code of Ethics on its website.

ITEM 2—PROPERTIES

The Bank owns and maintains the premises in which seven of the ten banking facilities are located, and leases offices in Carrollton, Alliance and Malvern. The location of each of the currently operating offices is as follows:

Minerva Office:	614 E. Lincoln Way, P.O. Box 256, Minerva, Ohio, 44657
Salem Office:	141 S. Ellsworth Ave., P.O. Box 798, Salem, Ohio, 44460
Waynesburg Office:	8607 Waynesburg Dr. SE, P.O. Box 746, Waynesburg, Ohio, 44423
Hanoverton Office:	30034 Canal St., P.O. Box 178, Hanoverton, Ohio, 44423
Carrollton Office:	1017 Canton Rd. NW, P.O. Box 8, Carrollton, Ohio, 44615
Alliance Office:	610 West State St., Alliance, Ohio, 44601
Lisbon Office:	7985 Dickey Dr., Lisbon, Ohio 44432
Louisville Office:	1111 N. Chapel St., Louisville, Ohio 44641
East Canton Office:	440 W. Noble, East Canton, Ohio, 44730
Malvern Office:	4070 Alliance Rd., Malvern, Ohio 44644

In the opinion of management, the properties listed above are adequate for their present uses and the Bank's business requirements and are adequately covered by insurance.

ITEM 3—LEGAL PROCEEDINGS

The Corporation is not a party to any pending material legal or administrative proceedings, other than ordinary routine litigation incidental to the business of the Corporation. Further, there are no material legal proceedings in which any director, executive officer, principal shareholder or affiliate of the Corporation is a party or has a material interest that is adverse to the Corporation. No routine litigation in which the Corporation is involved is expected to have a material adverse impact on the financial position or results of operations of the Corporation.

ITEM 4—SUBMISSION OF MATTERS TO A VOTE OF SECURITY HOLDERS

Nothing to be reported.

PART II

ITEM 5—MARKET FOR REGISTRANT’S COMMON EQUITY, RELATED SHAREHOLDER MATTERS AND ISSUER PURCHASES OF EQUITY SECURITIES

The Corporation had 2,029,558 common shares outstanding on June 30, 2009 with 679 shareholders of record and an estimated 281 additional beneficial holders whose stock was held in nominee name.

The common shares of Consumers Bancorp, Inc. are traded on the over-the-counter bulletin board. The following quoted market prices reflect inter-dealer prices, without adjustments for retail markups, markdowns, or commissions and may not represent actual transactions. The market prices represent highs and lows reported during the quarterly period.

<u>Quarter Ended</u>	<u>September 30, 2008</u>	<u>December 31, 2008</u>	<u>March 31, 2009</u>	<u>June 30, 2009</u>
High	\$ 13.50	\$ 13.70	\$ 13.00	\$ 12.70
Low	11.55	11.25	11.75	11.75
Cash dividends paid per share	0.10	0.10	0.10	0.10

<u>Quarter Ended</u>	<u>September 30, 2007</u>	<u>December 31, 2007</u>	<u>March 31, 2008</u>	<u>June 30, 2008</u>
High	\$ 13.00	\$ 12.75	\$ 12.01	\$ 12.30
Low	10.05	10.90	10.50	11.70
Cash dividends paid per share	0.08	0.08	0.08	0.10

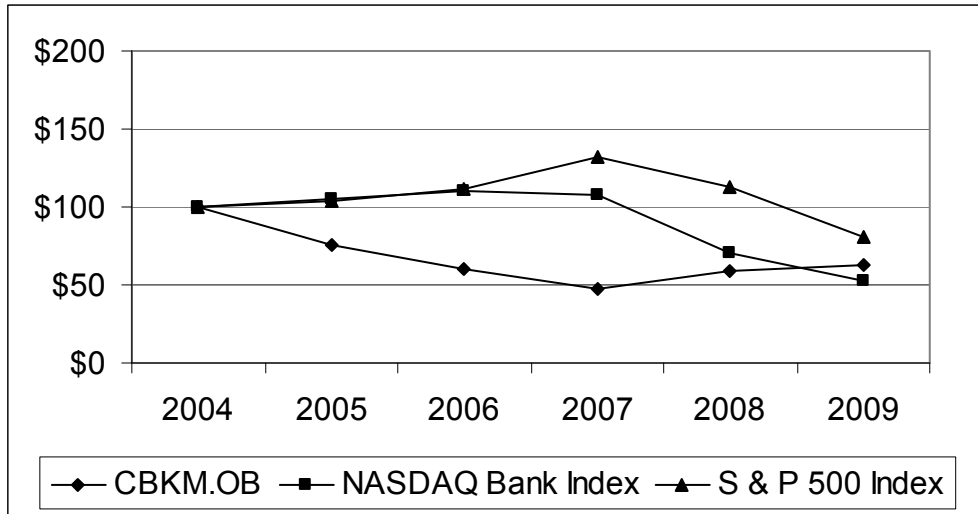
Management does not have knowledge of the prices paid in all transactions and has not verified the accuracy of those prices that have been reported. Because of the lack of an established market for the Corporation’s common shares, these prices may not reflect the prices at which the common shares would trade in an active market.

The Corporation’s principal source of funds for dividend payment is dividends received from the Bank. Banking regulations limit the amount of dividends that may be paid without prior approval of regulatory agencies. Under these regulations, the amount of dividends that may be paid in any calendar year is limited to the current year’s net profits, combined with the retained net profits of the preceding two years, subject to the capital requirements described above. See Note 1 and Note 11 to the Consolidated Financial Statements for dividend restrictions.

The Corporation has no compensation plans under which equity securities are authorized for issuance. There were no repurchases of the Corporation’s securities during the 2009 fiscal year.

Performance Graph

Set forth below is a line graph comparing the yearly change in the cumulative total shareholder return on Consumers Bancorp’s Common Stock against the cumulative return of the NASDAQ Bank Index and the S&P 500 Index for the five-year period ended June 30, 2009. The total shareholder return assumes a \$100 investment in Consumers Bancorp’s Common Stock, the NASDAQ Bank Index and the S&P 500 Index on June 30, 2004 and that all dividends were reinvested.



	<u>2004</u>	<u>2005</u>	<u>2006</u>	<u>2007</u>	<u>2008</u>	<u>2009</u>
CBKM.OB	\$ 100	\$ 75	\$ 60	\$ 48	\$ 58	\$ 62
NASDAQ Banks Index	100	105	110	108	70	53
S&P 500 Index	100	104	111	132	112	81

Historical stock price performance shown on the graph is not necessarily indicative of the future price performance.

ITEM 6—SELECTED FINANCIAL DATA

Not applicable for Smaller Reporting Companies.

ITEM 7—MANAGEMENT’S DISCUSSION AND ANALYSIS OF FINANCIAL CONDITION AND RESULTS OF OPERATIONS

(Dollars in thousands, except per share data)

General

The following is management’s analysis of the Corporation’s financial condition and results of operations as of and for the year ended June 30, 2009 and 2008. This discussion is designed to provide a more comprehensive review of the operating results and financial position than could be obtained from an examination of the financial statements alone. This analysis should be read in conjunction with the consolidated financial statements and related footnotes and the selected financial data included elsewhere in this report.

Overview

Consumers Bancorp, Inc., a bank holding company incorporated under the laws of the State of Ohio, owns all of the issued and outstanding capital stock of Consumers National Bank, a bank chartered under the laws of the United States of America. The Corporation’s activities have been limited primarily to holding the common stock of the Bank. The Bank’s business involves attracting deposits from businesses and individual customers and using such deposits to originate commercial, mortgage and consumer loans in its market area, consisting primarily of Stark, Columbiana, Carroll and contiguous counties in Ohio. The Bank also invests in securities consisting primarily of U.S. government sponsored entities, municipal obligations and mortgage-backed securities issued by Fannie Mae and Freddie Mac.

Comparison of Results of Operations for the Years Ended June 30, 2009 and June 30, 2008

Net Income. Net income increased by \$224, or 12.4%, from 2008 to 2009 mainly as a result of an increase in the net interest income and an increase in other income.

Net Interest Income. Net interest income, the difference between interest income earned on interest-earning assets and interest expense incurred on interest-bearing liabilities, is the largest component of the Corporation’s earnings. Net interest income is affected by changes in the volumes, rates and composition of interest-earning assets and interest-bearing liabilities. Net interest margin is calculated by dividing net interest income on a fully tax equivalent basis (FTE) by total interest-earning assets. FTE income includes tax-exempt income, restated to a pre-tax equivalent, based on the statutory federal income tax rate. All average balances are daily average balances. Non-accruing loans are included in average loan balances.

<u>Net Interest Income Year ended June 30,</u>	<u>2009</u>	<u>2008</u>
Net interest income	\$ 9,547	\$ 8,850
Taxable equivalent adjustments to net interest	373	326
Net interest income, fully taxable equivalent.....	\$ 9,920	\$ 9,176
Net interest margin	4.15%	4.32%
Taxable equivalent adjustment	0.16	0.16
Net interest margin, fully taxable equivalent	<u>4.31%</u>	<u>4.48%</u>

Net interest income for the year of 2009 was \$9,547, an increase of \$697, or 7.9%, from \$8,850 in the year of 2008. The Corporation’s net interest margin for the year ended June 30, 2009 was 4.31%, a decrease of 17 basis points from 2008. Interest income for the year of 2009 was \$13,100, a decrease of \$378, or 2.8%, from \$13,478 in the year of 2008. This decline was mainly the result of lower market rates affecting the yield on loans, which was partially offset by a \$25,113 increase in average interest earning assets. Interest expense for the year of 2009 was \$3,553, a decrease of \$1,075, or 23.2%, from \$4,628 in the year of 2008. This decrease was mainly the result of lower market rates affecting the rates paid on most interest-bearing deposit accounts and borrowings.

**MANAGEMENT'S DISCUSSION AND ANALYSIS OF FINANCIAL
CONDITION AND RESULTS OF OPERATIONS—(continued)**

(Dollars in thousands, except per share data)

Average Balance Sheet and Net Interest Margin

	2009			2008		
	Average Balance	Interest	Yield/ Rate	Average Balance	Interest	Yield/ Rate
Interest earning assets:						
Taxable securities.....	\$ 45,600	\$ 2,186	4.78%	\$ 37,504	\$ 1,888	5.03%
Nontaxable Securities (1).....	17,688	1,116	6.09	17,123	1,024	5.98
Loans receivable (1).....	156,787	10,093	6.44	146,277	10,781	7.37
Interest bearing deposits and federal funds sold	9,849	78	0.79	3,907	111	2.84
Total interest earning assets	<u>229,924</u>	<u>13,473</u>	5.86%	<u>204,811</u>	<u>13,804</u>	6.74%
Non-interest earning assets	12,708			14,694		
Total assets.....	<u>\$ 242,632</u>			<u>\$ 219,505</u>		
Interest bearing liabilities:						
NOW	\$ 11,699	\$ 49	0.42%	\$ 10,197	\$ 43	0.42%
Savings	54,912	319	0.58	49,008	491	1.00
Time deposits	84,382	2,645	3.13	76,547	3,376	4.41
Short-term borrowings	14,327	212	1.48	10,918	386	3.54
FHLB advances.....	9,748	328	3.36	8,514	332	3.90
Total interest bearing liabilities.....	<u>175,068</u>	<u>3,553</u>	2.03%	<u>155,184</u>	<u>4,628</u>	2.98%
Non-interest bearing liabilities	47,095			44,496		
Total liabilities	<u>222,163</u>			<u>199,680</u>		
Shareholders' equity	20,469			19,825		
Total liabilities and shareholders' equity	<u>\$ 242,632</u>			<u>\$ 219,505</u>		
Net interest income, interest rate spread (1).....		\$ 9,920	3.83%		\$ 9,176	3.76%
Net interest margin (net interest as a percent of average interest earning assets) (1).....			4.31%			4.48%
Federal tax exemption on non-taxable securities and loans included in interest income		<u>\$ 373</u>			<u>\$ 326</u>	
Average interest earning assets to interest bearing liabilities			131.33%			131.98%

(1) Calculated on a fully taxable equivalent basis

**MANAGEMENT'S DISCUSSION AND ANALYSIS OF FINANCIAL
CONDITION AND RESULTS OF OPERATIONS—(continued)**

(Dollars in thousands, except per share data)

The following table presents the changes in the Corporation's interest income and interest expense resulting from changes in interest rates and changes in the volume of interest-earning assets and interest-bearing liabilities. Changes attributable to both rate and volume that cannot be segregated have been allocated in proportion to the changes due to rate and volume.

INTEREST RATES AND INTEREST DIFFERENTIAL

	2009 Compared to 2008 Increase / (Decrease)			2008 Compared to 2007 Increase / (Decrease)		
	Total Change	Change due to Volume	Change due to Rate	Total Change	Change due to Volume	Change due to Rate
	(In thousands)					
Interest earning assets:						
Taxable securities	\$ 298	\$ 397	\$ (99)	\$ 645	\$ 551	\$ 94
Nontaxable securities (1)	92	74	18	151	142	9
Loans receivable (2).....	(688)	739	(1,427)	341	153	188
Federal funds sold	(33)	86	(119)	53	91	(38)
Total interest income.....	<u>(331)</u>	<u>1,296</u>	<u>(1,627)</u>	<u>1,190</u>	<u>937</u>	<u>253</u>
Interest bearing liabilities:						
NOW accounts	6	6	—	14	—	14
Savings deposits.....	(172)	54	(226)	43	(12)	55
Time deposits.....	(731)	319	(1,050)	385	356	29
Short-term borrowings	(174)	96	(270)	200	184	16
FHLB advances.....	(4)	45	(49)	74	145	(71)
Total interest expense	<u>(1,075)</u>	<u>520</u>	<u>(1,595)</u>	<u>716</u>	<u>673</u>	<u>43</u>
Net interest income	<u>\$ 744</u>	<u>\$ 776</u>	<u>\$ (32)</u>	<u>\$ 474</u>	<u>\$ 264</u>	<u>\$ 210</u>

(1) Nontaxable income is adjusted to a fully tax equivalent basis utilizing a 34% tax rate.

(2) Non-accrual loan balances are included for purposes of computing the rate and volume effects although interest on these balances has been excluded.

Provision for Loan Losses. The provision for loan losses represents the charge to income necessary to adjust the allowance for loan losses to an amount that represents management's assessment of the estimated probable credit losses inherent in the Corporation's loan portfolio that have been incurred at each balance sheet date. The provision for loan losses was \$579 in fiscal year 2009 compared to \$430 in fiscal year 2008. The higher provision for loan losses in 2009 resulted mainly from lower collateral value assumptions on non-accrual loans based on current market valuations, an increase in non-performing loans, as well as an increase in net charge-offs.

For 2009, net charge-offs were \$296, or 0.18% of total loans, and were mainly within the real estate mortgage portfolio. This compares with \$102, or 0.07% of total loans, for the same period last year.

Non-performing loans as a percentage of total loans increased from 0.94% as of June 30, 2008 to 1.75% as of June 30, 2009. The increase in non-performing loans from June 30, 2008 to June 30, 2009 was primarily related to an increase in non-accrual loans within the commercial real estate and multi-family residential real estate portfolios. Non-performing loans have been considered in management's analysis of the appropriateness of the allowance for loan losses. Management and the Board of Directors are closely monitoring these loans and believe that the prospects for recovery of principal, less identified specific reserves, are good.

**MANAGEMENT'S DISCUSSION AND ANALYSIS OF FINANCIAL
CONDITION AND RESULTS OF OPERATIONS—(continued)**

(Dollars in thousands, except per share data)

Other Income. For 2009, total other income primarily included service charges on deposit accounts, debit card interchange income, and net securities gains. Service charges on deposit accounts decreased by \$8, or 0.5%, in 2009 to \$1,671 from \$1,679 mainly from a decline in overdraft account fee income. Debit card interchange income increased in 2009 to \$447 from \$407 from the previous fiscal year due to higher volume as a result of an increase in a number of debit cards issued.

Gains recognized on the sale of securities totaled \$185 during 2009 and \$26 during 2008.

Other Expenses. Total other expenses were \$8,987 for the year ended June 30, 2009; an increase of \$395, or 4.6% from \$8,592 for the year ended June 30, 2008.

Salaries and employee benefit expenses decreased \$48, or 1.1%, during the fiscal year ended June 30, 2009. Salaries and employee benefit expenses were positively impacted by a reduction to the accrual for salary continuation benefits of approximately \$140 triggered by the departure of the previous chief executive officer. In addition, an increase in salary expenses resulted from the addition of business development officers. This was partially offset by a reduction in overtime wages, the implementation of a ten percent reduction in hours for non-exempt personnel and a salary freeze for exempt personnel during the third quarter of fiscal year 2009.

Occupancy and equipment expenses decreased by \$88, or 7.5%, mainly due lower depreciation expense associated with furniture, fixtures and equipment.

Data processing expenses increased by \$185 mainly due to a data system upgrade of the core processing system that was completed during the third quarter of fiscal year 2008. The Corporation moved from completing the data processing in-house to an out-sourced environment.

Federal Deposit Insurance Corporation (FDIC) assessments increased by \$288, or 720.0%, as a result of a one time credit received from the FDIC in April 2007 being fully exhausted in fiscal year 2008, an industry wide deposit insurance rate increase that went into effect on January 1, 2009, and a special assessment charged to all banks based on asset size, which amounted to \$114 for the Corporation in 2009.

The amortization of the intangible is directly related to the core deposit purchase premium of the Lisbon, Ohio branch that was purchased in January 2000.

Debit card processing expenses decreased by \$116, or 29.8%, during the 2009 fiscal year. During the third quarter of fiscal year 2008, approximately \$89 of one-time expenses was recognized due to the migration to a new regional electronic funds transfer processor. The remaining portion of the decrease was a result of the reduced cost due to lower pricing from our new electronic funds transfer processor.

Other expense totaled \$1,268 for the year ended June 30, 2009, an increase of \$15, or 1.2%, from \$1,253 for the year ended June 30, 2008.

Income Tax Expense. The provision for income taxes totaled \$569 and \$493 for the years ended June 30, 2009 and 2008, respectively. The effective tax rates were 21.9% and 21.5%, respectively. The effective tax rate differed from the federal statutory rate principally as a result of tax-exempt income from obligations of states and political subdivisions, loans and earnings on bank owned life insurance.

Financial Condition

Total assets at June 30, 2009 were \$251,862 compared to \$233,077 at June 30, 2008, an increase of \$18,785, or 8.1%. The increase in total assets is mainly attributed to an increase in loans of \$7,791, or 5.1%, an increase in federal funds sold and interest-bearing deposits in financial institutions of \$8,605 and an increase in available-for-sale securities of \$1,563, or 2.6%.

**MANAGEMENT'S DISCUSSION AND ANALYSIS OF FINANCIAL
CONDITION AND RESULTS OF OPERATIONS—(continued)**

(Dollars in thousands, except per share data)

Securities. Available-for-sale securities increased by \$1,563 from \$59,212 at June 30, 2008 to \$60,775 at June 30, 2009. The securities portfolio is mainly comprised of mortgage-backed securities issued by Fannie Mae and Freddie Mac, obligations of government sponsored enterprises and state and political subdivisions.

Within the securities portfolio, the Corporation owns a trust preferred security, which represents pooled trust preferred securities issued by other financial and insurance companies. At June 30, 2009, the trust preferred security did not trade in an active, open market with readily observable prices and therefore was classified within Level 3 of the fair value valuation hierarchy. The fair value of this security has been calculated using a discounted cash flow model and market liquidity premium as permitted by FSP 157-4. As of June 30, 2009, the trust preferred security had an amortized cost of \$982 and a fair value of \$356. With the current market conditions, the assumptions used to determine the fair value of Level 3 securities have greater subjectivity due to the lack of observable market transactions. The fair value of this security has declined due to the fact that subsequent offerings of similar securities pay a higher market rate of return. This higher rate of return reflects the increased credit and liquidity risks in the marketplace.

Due to an increase in principal and/or interest deferrals by the issuers of the underlying securities, the cash interest payments for the trust preferred security are being deferred. Interest owed to the Corporation is being added to the bond balance, or capitalized. The trust preferred security the Corporation owns has a "Ca" rating by Moody's and a "C" rating by Fitch, which is defined as highly speculative. The Corporation uses the OTTI evaluation model to compare the present value of expected cash flows to the previous estimate to ensure there are no adverse changes in cash flows during the period. The OTTI model considers the structure and term of the CDO and the financial condition of the underlying issuers. Specifically, the model details interest rates, principal balances of note classes and underlying issuers, the timing and amount of interest and principal payments of the underlying issuers, and the allocation of the payments to the note classes. The current estimate of expected cash flows is based on the most recent trustee reports and any other relevant market information including announcements of interest payment deferrals or defaults of underlying trust preferred securities. Assumptions used in the model include expected future default rates and prepayments. We assume no recoveries on defaults and treat all interest payment deferrals as defaults. In addition we use the model to "stress" the CDO, or make assumptions more severe than expected activity, to determine the degree to which assumptions could deteriorate before the CDO could no longer fully support repayment of the Corporation's note class. Upon completion of the June 30, 2009 analysis, there were no adverse changes in the expected cash flows during the period that would indicate OTTI. Therefore, since the Corporation does not intend to sell the security and it is not likely the Corporation will be required to sell the security at an unrealized loss position prior to any anticipated recovery in fair value, which may be maturity, management does not believe there is any other-than-temporary impairment from this security at June 30, 2009. Also, management has reviewed this security and these conclusions with an independent third party. However, if there is further deterioration in the underlying collateral of this security, other-than-temporary impairments may occur in future periods.

The following table sets forth certain information regarding the amortized cost and fair value of the Corporation's securities at the dates indicated.

	<u>Amortized Cost</u>	<u>Gross Unrealized Gains</u>	<u>Gross Unrealized Losses</u>	<u>Fair Value</u>
June 30, 2009				
Obligations of government sponsored entities	\$ 14,278	\$ 385	\$ (1)	\$ 14,662
Obligations of state and political subdivisions.....	18,171	62	(608)	17,625
Mortgage-backed securities - residential	27,334	810	(12)	28,132
Trust preferred security	982	—	(626)	356
Total securities	<u>\$ 60,765</u>	<u>\$ 1,257</u>	<u>\$ (1,247)</u>	<u>\$ 60,775</u>
June 30, 2008				
Obligations of government sponsored entities	\$ 10,133	\$ 160	\$ (44)	\$ 10,249
Obligations of state and political subdivisions.....	18,461	19	(582)	17,898
Mortgage-backed securities - residential	30,645	85	(406)	30,324
Trust preferred security	985	—	(244)	741
Total securities	<u>\$ 60,224</u>	<u>\$ 264</u>	<u>\$ (1,276)</u>	<u>\$ 59,212</u>

**MANAGEMENT'S DISCUSSION AND ANALYSIS OF FINANCIAL
CONDITION AND RESULTS OF OPERATIONS—(continued)**

(Dollars in thousands, except per share data)

The following tables summarize the amounts and distribution of the Corporation's securities held and the weighted average yields as of June 30, 2009:

	<u>Amortized Cost</u>	<u>Fair Value</u>	<u>Average Yield / Cost</u>
AVAILABLE-FOR-SALE			
Obligations of government sponsored entities:			
3 months or less	\$ 775	\$ 776	4.00%
Over 3 months through 1 year	6,501	6,665	4.22
Over 1 year through 5 years	<u>7,002</u>	<u>7,221</u>	4.01
Total obligations of government sponsored entities	14,278	14,662	4.11
Obligations of state and political subdivisions:			
Over 3 months through 1 year	36	36	6.52
Over 1 year through 5 years	—	—	—
Over 5 years through 10 years	2,251	2,184	5.59
Over 10 years	<u>15,884</u>	<u>15,405</u>	6.19
Total obligations of state and political subdivisions	18,171	17,625	6.12
Mortgage-backed securities - residential:			
Over 1 year through 5 years	20,919	21,532	4.95
Over 5 years through 10 years	<u>6,415</u>	<u>6,600</u>	5.30
Total mortgage-backed securities	27,334	28,132	5.04
Trust preferred security	<u>982</u>	<u>356</u>	—
Total securities	<u>\$ 60,765</u>	<u>\$ 60,775</u>	5.06%

The weighted average interest rates are based on coupon rates for securities purchased at par value and on effective interest rates considering amortization or accretion if the securities were purchased at a premium or discount. The weighted average yield on tax-exempt obligations has been calculated on a tax equivalent basis. Average yields are based on amortized cost balances.

At June 30, 2009, available for sale securities included municipal securities issued by Farmersville Texas school district that are insured by Permanent School Fund Guarantee with an aggregate book value of \$2,175, or 10.1%, of shareholders' equity. Other than this issuance, there were no other holdings of securities of any one issuer, other than the U.S. government and its agencies and corporations, with an aggregate book value which exceeds 10% of shareholders' equity.

**MANAGEMENT'S DISCUSSION AND ANALYSIS OF FINANCIAL
CONDITION AND RESULTS OF OPERATIONS—(continued)**

(Dollars in thousands, except per share data)

Loans. Loan receivables increased by \$7,791 to \$160,141 at June 30, 2009 compared to \$152,350 at June 30, 2008, with the commercial, financial and agriculture loan portfolio increasing by \$9,162. As of June 30, 2009, real estate construction loans included \$3,787 of owner-occupied commercial loans, \$2,502 of nonowner-occupied commercial loans and \$618 of owner-occupied residential real estate loans. The increase in loan receivables is mainly attributable to more aggressive calling efforts by the lending officers.

Major classifications of loans, net of deferred loan fees and costs, were as follows as of June 30:

	<u>2009</u>	<u>2008</u>
Real estate—mortgage.....	\$ 49,116	\$ 50,765
Real estate—construction	6,907	6,404
Commercial, financial and agricultural.....	98,392	89,230
Installment loans to individuals	5,726	5,951
Total Loans	<u>\$ 160,141</u>	<u>\$ 152,350</u>

The following is a schedule of contractual maturities and repayments of real estate construction, commercial, financial and agricultural loans, as of June 30, 2009:

Due in one year or less	\$ 10,449
Due after one year but within five years.....	12,338
Due after five years	82,512
Total	<u>\$ 105,299</u>

The following is a schedule of fixed and variable rate real estate construction, commercial, financial and agricultural loans due after one year (variable rate loans are those loans with floating or adjustable interest rates) as of June 30, 2009:

	<u>Fixed Interest Rates</u>	<u>Variable Interest Rates</u>
Total real estate construction, commercial, financial and agricultural loans due after one year	\$27,606	\$67,244

Foreign Outstandings—there were no foreign outstandings during the periods presented. There are no concentrations of loans greater than 10% of total loans, which are not otherwise disclosed as a category of loans.

Allowance for Loan Losses. The allowance for loan losses balance and the provision charged to expense are judgmentally determined by management based upon a periodic review of the loan portfolio, an analysis of impaired loans, past loan loss experience, current economic conditions, collateral value assumptions for collateral-dependent loans and various other circumstances which are subject to change over time. Probable losses are estimated by stratifying the total loan portfolio into pools of homogenous loans by ownership, collateral type and loan purpose and applying the Bank's five year historical loss ratio to each loan pool. Also, the local unemployment rate is monitored and additional reserves are applied to all loans that are not assigned a specific reserve if there is an increase in the local unemployment rate. Specific reserves are determined by management's review of delinquent loans, non-accrual loans, loans classified as substandard, watch list loans, loans to industries experiencing economic difficulties and other selected large loans. The collectability of these loans is evaluated after considering the current financial position of the borrower, the estimated market value of the collateral, guarantees and the Corporation's collateral position versus other creditors. Judgments, which are necessarily subjective, as to the probability of loss and the amount of such loss, are formed on these loans, as well as other loans in the aggregate.

Failure to receive principal and interest payments when due on any loan results in efforts to restore such loan to a current status. Loans are classified as non-accrual when, in the opinion of management, full collection of principal and accrued interest is not expected. The loans must be brought and kept current for six sustained payments before being considered for removal from non-accrual status. Commercial and commercial real estate loans are classified as impaired if management determines that full collection of principal and interest, in accordance with the terms of the loan documents, is not probable. If a loan is impaired, a portion of the allowance is allocated so the loan is reported, net, at the present value of estimated future cash flows using the loan's existing rate or at the fair value of collateral if repayment is expected from the collateral. Loans are evaluated for impairment when payments are delayed, typically 90 days or more, or when it is probable that not all principal and interest amounts will be collected according to the original terms of the loan. As of June 30, 2009, impaired loans totaled \$2,231, all of which are included in non-accrual loans. Continued unsuccessful collection efforts generally lead to initiation of foreclosure or other legal proceedings.

**MANAGEMENT'S DISCUSSION AND ANALYSIS OF FINANCIAL
CONDITION AND RESULTS OF OPERATIONS—(continued)**

(Dollars in thousands, except per share data)

As of June 30, 2009, the Bank's loan portfolio was comprised of \$12,527, or 7.8%, in revolving home equity loans and \$1,651, or 1.0%, in junior liens. A majority of the Bank's home equity loans were originated at 85% or less of the home value with a small number of loans originated at 90% of the home value with the additional requirements of a higher minimum credit score and a lower debt-to-income ratio. As of June 30, 2009, delinquency within these segments of the portfolio was 0.01% of total loans. We do not originate option ARM products, high loan-to-value mortgages or fixed rate interest only residential real estate loans.

The following schedule summarizes non-accrual, past due, impaired and restructured loans for the years ended June 30:

	<u>2009</u>	<u>2008</u>
Non-accrual loans	\$ 2,476	\$ 1,433
Accruing loans past due 90 days or more.....	328	—
Total non-performing loans.....	<u>\$ 2,804</u>	<u>\$ 1,433</u>
Other real estate owned	181	—
Total non-performing assets	<u>\$ 2,985</u>	<u>\$ 1,433</u>
Impaired Loans	\$ 2,231	\$ 1,270
Accruing restructured loans	\$ 147	—

As of June 30, 2009, one loan for \$328 was past due 90 days or more and still accruing. Subsequent to June 30, 2009, the customer substantially paid down the outstanding balance of this loan from the proceeds from the sale of a portion of the collateral securing the loan. The remaining non-performing loans are either in the process of foreclosure or efforts are being made to work with the borrower to bring the loan current.

Properties acquired by the Corporation as a result of foreclosure, or by deed in lieu of foreclosure, are classified as "other real estate owned" until such time as they are or otherwise disposed. As of June 30, 2009, there was \$181, or five individual properties, classified as other real estate owned. Subsequent to June 30, 2009, two of the properties have been sold for amounts slightly above the recorded value.

Potential Problem Loans. There were no loans, not otherwise identified above, included on management's watch or troubled loan lists that management has serious doubts as to the ability of such borrowers to comply with the loan repayment terms. Management's watch and troubled loan lists includes loans which management has some doubt as to the borrowers' ability to comply with the present repayment terms, loans which management is actively monitoring due to changes in the borrowers financial condition and other loans which management wants to more closely monitor due to special circumstances. These loans and their potential loss exposure have been considered in management's analysis of the adequacy of the allowance for loan losses.

The following table summarizes the Corporation's loan loss experience, and provides a breakdown of the charge-off, recovery and other activity for the years ended June 30:

	<u>2009</u>	<u>2008</u>
Allowance for loan losses at beginning of year	\$ 1,709	\$ 1,381
Loans charged off:		
Real estate mortgage	241	33
Real estate construction	—	—
Commercial, financial and agricultural.....	20	35
Installment loans to individuals	139	137
Total charge offs	<u>400</u>	<u>205</u>
Recoveries:		
Real estate mortgage	12	2
Real estate construction	—	—
Commercial, financial and agricultural.....	6	31
Installment loans to individuals	86	70
Total recoveries.....	<u>104</u>	<u>103</u>
Net charge offs	296	102
Provision for loan losses charged to operations	579	430
Allowance for loan losses at end of year	<u>\$ 1,992</u>	<u>\$ 1,709</u>

**MANAGEMENT'S DISCUSSION AND ANALYSIS OF FINANCIAL
CONDITION AND RESULTS OF OPERATIONS—(continued)**

(Dollars in thousands, except per share data)

The following schedule is a breakdown of the allowance for loan losses allocated by type of loan and related ratios:

	Allocation of the Allowance for Loan Losses			
	Allowance Amount	% of Loan Type to Total Loans	Allowance Amount	% of Loan Type to Total Loans
	June 30, 2009		June 30, 2008	
Commercial, financial and agricultural	\$ 1,065	61.4%	\$ 1,031	57.4%
Installment loans to individuals	227	3.6	83	4.6
Real estate	700	35.0	595	38.0
Total	<u>\$ 1,992</u>	<u>100.0%</u>	<u>\$ 1,709</u>	<u>100.0%</u>

While management's periodic analysis of the adequacy of the allowance for loan loss may allocate portions of the allowance for specific problem loan situations, the entire allowance is available for any loan charge-off that may occur.

Funding Sources. Total deposits increased \$15,207, or 8.1%, from \$188,844 at June 30, 2008 to \$204,051 at June 30, 2009. Non-interest bearing deposits decreased \$1,625, or 3.7%, and interest-bearing checking balances decreased \$728, or 5.5%, from June 30, 2008 to June 30, 2009. Time deposits increased \$11,854, or 15.1%, and savings deposits increased \$5,706, or 10.9%, from June 30, 2008 to June 30, 2009. We believe commercial and retail customers are turning to community banking in these uncertain times and this trend is reflected in the increase in the deposit balances.

The following is a schedule of average deposit amounts and average rates paid on each category for the periods included:

	Years Ended June 30,			
	2009		2008	
	Amount	Rate	Amount	Rate
Non-interest bearing demand deposit	\$ 45,089	—	\$ 42,933	—
Interest bearing demand deposit	11,699	0.42%	10,197	0.42%
Savings	54,912	0.58	49,008	1.00
Certificates and other time deposits	84,382	3.13	76,547	4.41
Total	<u>\$ 196,082</u>	<u>1.54%</u>	<u>\$ 178,685</u>	<u>2.19%</u>

The following table summarizes time deposits issued in amounts of \$100,000 or more as of June 30, 2009 by time remaining until maturity:

Maturing in:	
Under 3 months	\$ 2,558
Over 3 to 6 months	9,981
Over 6 to 12 months	8,784
Over 12 months	9,684
Total	<u>\$ 31,007</u>

See Note 7—Short-Term Borrowings to the Consolidated Financial Statements, for information concerning short-term borrowings.

Shareholders' equity. Total shareholders' equity increased by \$1,890 from \$19,571 at June 30, 2008 to \$21,461 at June 30, 2009. The increase was primarily due to net income of \$2,027 for the current fiscal year. This increase was partially offset by cash dividends paid of \$812.

Liquidity

Management considers the asset position of the Bank to be sufficiently liquid to meet normal operating needs and conditions. The Bank's earning assets are divided primarily between loans and available-for-sale securities, with any excess funds placed in federal funds sold on a daily basis.

**MANAGEMENT'S DISCUSSION AND ANALYSIS OF FINANCIAL
CONDITION AND RESULTS OF OPERATIONS—(continued)**

(Dollars in thousands, except per share data)

Net cash from operating activities for the 2009 fiscal year were \$2,510, net cash from investing activities was \$(10,911) and net cash from financing activities was \$16,330. The major sources of cash were \$15,207 net increase in deposits, \$25,506 net increase from sales, maturities or principal pay downs on available-for-sale securities. The major uses of cash were the \$25,934 purchase of securities and an \$8,286 net increase in loans. Total cash and cash equivalents was \$18,891 as of June 30, 2009 compared to \$10,962 at June 30, 2008.

The Bank groups its loan portfolio into three major categories: real estate loans; commercial, financial and agricultural loans; and consumer loans. The Bank's real estate loan portfolio consists of three basic segments: conventional mortgage loans having fixed rates for terms not longer than fifteen years, variable rate home equity line of credit loans and fixed rate loans having maturity or renewal dates that are less than the scheduled amortization period. Commercial, financial and agricultural loans are comprised of both variable rate notes subject to interest rate changes based on the prime rate or T-bill and fixed rate notes having maturities of generally not greater than five years. Personal loans offered by the Bank are generally written for periods of up to five years, based on the nature of the collateral. These may be either installment loans having regular monthly payments or demand type loans for short periods of time.

Funds not allocated to the Bank's loan portfolio are invested in various securities having diverse maturity schedules. The majority of the Bank's securities are held in obligations of U.S. Government sponsored entities, mortgage-backed securities, and investments in tax free municipal bonds.

The Bank offers several forms of deposit products to its customers. The rates offered by the Bank and the fees charged for them are competitive with others available currently in the market area. While the Bank continues to be under competitive pressures in the Bank's market area as financial institutions attempt to attract and keep new deposits, we believe many commercial and retail customers have been turning to community banking in these uncertain times. Time deposit interest rates continued to decline in the 2009 fiscal year. Compared to our peers, the Corporation's core deposits consist of a large percentage of non-interest bearing demand deposits resulting in the cost of funds remaining at a relatively low level at 2.03%.

Jumbo time deposits (those with balances of \$100,000 and over) increased from \$23,715 at June 30, 2008 to \$31,007 at June 30, 2009. These deposits are monitored closely by the Bank and typically priced on an individual basis. When these deposits are from a municipality, certain bank-owned securities are pledged to guarantee the safety of these public fund deposits as required by Ohio law. The Corporation has the option to use a fee paid broker to obtain deposits from outside its normal service area as an additional source of funding. However, these deposits are not relied upon as a primary source of funding and the Bank can foresee no dependence on these types of deposits in the near term.

The net interest margin is monitored monthly. It is the Bank's goal to maintain the net interest margin at 4.0% or greater. The net interest margin on a tax equivalent basis for 2009 was 4.31% as compared to 4.48% for 2008.

Capital Resources

At June 30, 2009, management believes the Bank complied with all regulatory capital requirements. Based on the Bank's computed regulatory capital ratios, the Office of the Comptroller of the Currency has determined the Bank to be well capitalized under the Federal Deposit Insurance Act as of its latest exam date. The Bank's actual and required capital amounts are disclosed in Note 11 of the consolidated financial statements. Management is not aware of any matters occurring subsequent to that exam that would cause the Bank's capital category to change.

Impact of Inflation and Changing Prices

The financial statements and related data presented herein have been prepared in accordance with U.S. generally accepted accounting principles, which require the measurement of financial position and results of operations primarily in terms of historical dollars without considering changes in the relative purchasing power of money over time due to inflation. Unlike most industrial companies, virtually all of the assets and liabilities of the Corporation are monetary in nature. Therefore, interest rates have a more significant impact on a financial institution's performance than the effects of general levels of inflation. Interest rates do not necessarily move in the same direction or in the same magnitude as the prices of goods and services. The liquidity, maturity structure and quality of the Corporation's assets and liabilities are critical to the maintenance of acceptable performance levels.

MANAGEMENT'S DISCUSSION AND ANALYSIS OF FINANCIAL CONDITION AND RESULTS OF OPERATIONS—(continued)

(Dollars in thousands, except per share data)

Critical Accounting Policies and Use of Significant Estimates

The financial condition and results of operations for Consumers Bancorp, Inc. presented in the Consolidated Financial Statements, accompanying notes to the Consolidated Financial Statements and management's discussion and analysis are, to a large degree, dependent upon the Corporation's accounting policies. The selection and application of these accounting policies involve judgments, estimates and uncertainties that are susceptible to change.

Presented below is a discussion of the accounting policy that management believes is the most important to the portrayal and understanding of the Corporation's financial condition and results of operations. This policy requires management's most difficult, subjective and complex judgments about matters that are inherently uncertain. In the event that different assumptions or conditions were to prevail, and depending upon the severity of such changes, the possibility of materially different financial condition or results of operations is a reasonable likelihood. Also, see Note 1 of the Notes to Consolidated Financial Statements for additional information related to significant accounting policies.

Allowance for Loan Losses. Management periodically reviews the loan portfolio in order to establish an estimated allowance for loan losses (allowance) that are probable as of the respective reporting date. Additions to the allowance are charged against earnings for the period as a provision for loan losses. Actual loan losses are charged against the allowance when management believes that the collection of principal will not occur. Unpaid interest for loans that are placed on non-accrual status is reversed against current interest income.

The allowance is regularly reviewed by management to determine whether or not the amount is considered adequate to absorb probable losses. If not, an additional provision is made to increase the allowance. This evaluation includes specific loss estimates on certain individually reviewed loans, loss estimates for loan groups or pools that are based on historical loss experience and general loss estimates that are based upon the size, quality, and concentration characteristics of the various loan portfolios, adverse situations that may affect a borrower's ability to repay, and current economic and industry conditions, among other things. The allowance is also subject to periodic examination by regulators whose review includes a determination as to its adequacy to absorb potential losses.

Those judgments and assumptions that are most critical to the application of this accounting policy are the initial and on-going credit-worthiness of the borrower, the amount and timing of future cash flows of the borrower that are available for repayment of the loan, the sufficiency of underlying collateral, the enforceability of third-party guarantees, the frequency and subjectivity of loan reviews and risk grading, emerging or changing trends that might not be fully captured in the historical loss experience, and charges against the allowance for actual losses that are greater than previously estimated. These judgments and assumptions are dependent upon or can be influenced by a variety of factors including the breadth and depth of experience of lending officers, credit administration and the loan review staff that periodically review the status of the loan, changing economic and industry conditions, changes in the financial condition of the borrower, and changes in the value and availability of the underlying collateral and guarantees.

While the Corporation strives to reflect all known risk factors in its evaluations, judgment errors may occur. If different assumptions or conditions were to prevail, the amount and timing of interest income and loan losses could be materially different. These factors are most pronounced during economic downturns. Since, as described above, so many factors can affect the amount and timing of losses on loans it is difficult to predict, with any degree of certainty, the affect on income if different conditions or assumptions were to prevail.

Valuation of Securities and Other-Than-Temporary Impairment (OTTI). The fair value of available-for-sale securities is estimated using relevant market information and other assumptions. Fair value measurements are classified within one of three levels in a valuation hierarchy based upon the transparency of inputs to the valuation of an asset or liability as of the measurement date. Fair value estimates involve uncertainties and matters of significant judgment regarding interest rates, credit risk, discounted cash flows, prepayments, and other factors, especially in the absence of broad markets for particular items. Changes in assumptions or in market conditions could significantly affect the estimates.

Securities are reviewed at least quarterly for indicators of other-than-temporary impairment. This determination requires significant judgment. In estimating other-than-temporary impairment, management evaluates: the length of time and extent the fair value has been less than cost, the expected cash flows of the security, the financial condition and near term prospects of the issuer, and whether the Corporation has the intent to sell the security or the likelihood the Corporation will be required to sell the security at an unrealized loss position prior to any anticipated recovery in fair value, which may be maturity. A decline in value that is considered to be other-than-temporary would be recorded as a loss within other income in the consolidated statements of income.

**MANAGEMENT'S DISCUSSION AND ANALYSIS OF FINANCIAL
CONDITION AND RESULTS OF OPERATIONS—(continued)**

(Dollars in thousands, except per share data)

Contractual Obligations, Commitments and Contingent Liabilities

The following table presents, as of June 30, 2009, the Corporation's significant fixed and determinable contractual obligations by payment date. The payment amounts represent those amounts contractually due to the recipient and do not include any unamortized premiums or discounts. Further discussion of the nature of each obligation is included in the referenced note to the consolidated financial statements.

	<u>Note Reference</u>	<u>2010</u>	<u>2011</u>	<u>2012</u>	<u>2013</u>	<u>2014</u>	<u>Thereafter</u>	<u>Total</u>
Certificates of deposit	6	\$ 61,006	\$21,378	\$ 3,117	\$3,420	\$1,052	\$ 457	\$ 90,430
Short-term borrowings	7	15,055	—	—	—	—	—	15,055
Federal Home Loan Advances	8	1,089	1,255	1,089	579	69	5,292	9,373
Salary continuation plan	9	22	22	22	22	22	747	857
Operating leases	4	97	35	33	33	33	50	281
Deposits without maturity		—	—	—	—	—	—	113,621

Note 12 to the Consolidated Financial Statements discusses in greater detail other commitments and contingencies and the various obligations that exist under those agreements. These commitments and contingencies consist primarily of commitments to extend credit to borrowers under lines of credit.

Off-Balance Sheet Arrangements

At June 30, 2009, the Corporation had no unconsolidated, related special purpose entities, nor did the Corporation engage in derivatives and hedging contracts, such as interest rate swaps, which may expose the Corporation to liabilities greater than the amounts recorded on the consolidated balance sheet. The Corporation's investment policy prohibits engaging in derivative contracts for speculative trading purposes; however, in the future, the Corporation may pursue certain contracts, such as interest rate swaps, in an effort to execute a sound and defensive interest rate risk management policy.

Forward-Looking Statements

All statements set forth in this discussion or future filings by the Corporation with the Securities and Exchange Commission, or other public or shareholder communications, or in oral statements made with the approval of an authorized executive officer, that are not historical in nature, including words or phrases "will likely result," "are expected to," "will continue," "is anticipated," "estimate," "project," "believe" or similar expressions are intended to identify "forward-looking statements" within the meaning of Section 27A of the Securities Act of 1933 and Section 21E of the Securities Exchange Act of 1934. These forward-looking statements may involve risks and uncertainties that are difficult to predict, may be beyond our control, and could cause actual results to differ materially from those described in such statements. Any such forward-looking statements are made only as of the date of this report or the respective dates of the relevant incorporated documents, as the case may be, and, except as required by law, we undertake no obligation to update these forward-looking statements to reflect subsequent events or circumstances. Factors that could cause actual results for future periods to differ materially from those anticipated or projected include, but are not limited to:

- regional and national economic conditions becoming less favorable than expected, resulting in, among other things, a deterioration in credit quality of assets and the underlying value of collateral could prove to be less valuable than otherwise assumed;
- material unforeseen changes in the financial condition or results of Consumers National Bank's customers;
- changes in levels of market interest rates which could reduce anticipated or actual margins;
- competitive pressures on product pricing and services;
- the nature, extent, and timing of government and regulatory actions; and
- a continued deterioration in market conditions causing debtors to be unable to meet their obligations.

The risks and uncertainties identified above are not the only risks we face. Additional risks and uncertainties not presently known to us or that we currently believe to be immaterial also may adversely affect us. Should any known or unknown risks and uncertainties develop into actual events, those developments could have material adverse effects on our business, financial condition and results of operations.

ITEM 8—FINANCIAL STATEMENTS AND SUPPLEMENTARY DATA

REPORT OF MANAGEMENT ON THE CORPORATION'S INTERNAL CONTROL OVER FINANCIAL REPORTING

Management of Consumers Bancorp, Inc. is responsible for establishing and maintaining adequate internal control over financial reporting. Internal control over financial reporting is a process designed to provide reasonable assurance regarding the reliability of financial reporting and the preparation of financial statements for external purposes in accordance with U. S. generally accepted accounting principles. Internal control over financial reporting includes those policies and procedures that (1) pertain to the maintenance of records that, in reasonable detail, accurately and fairly reflect the transactions and dispositions of assets; (2) provide reasonable assurance that transactions are recorded as necessary to permit preparation of financial statements in accordance with generally accepted accounting principles, and that receipts and expenditures are made only in accordance with authorizations of management and directors; and (3) provide reasonable assurance regarding prevention or timely detection of unauthorized acquisition, use or disposition of assets that could have a material effect on the financial statements.

Because of its inherent limitations, internal control over financial reporting may not prevent or detect misstatements. A control system, no matter how well conceived and operated, can provide only reasonable, not absolute, assurance that the objectives of the control system are met. Because of the inherent limitations in all control systems, no evaluation of controls can provide absolute assurance that all control issues and instances of fraud, if any, have been detected. Also, projections of any evaluation of effectiveness to future periods are subject to the risk that controls may become inadequate because of changes in conditions, or that the degree of compliance with the policies and procedures may deteriorate.

Management of Consumers Bancorp, Inc., including the Chief Executive Officer and the Chief Financial Officer, has assessed the Corporation's internal control over financial reporting as of June 30, 2009, based on criteria for effective internal control over financial reporting described in "Internal Control — Integrated Framework" issued by the Committee of Sponsoring Organizations of the Treadway Commission. Based on this assessment, management has concluded that the Corporation's internal control over financial reporting was effective as of June 30, 2009, based on the specified criteria.

This annual report does not include an attestation report of the Corporation's independent registered public accounting firm regarding internal control over financial reporting because management's report was not subject to attestation by the Corporation's registered public accounting firm pursuant to temporary rules of the Securities and Exchange Commission that permit the Corporation to provide only management's report.



Ralph J. Lober, II
Chief Executive Officer



Renee K. Wood
Chief Financial Officer & Treasurer

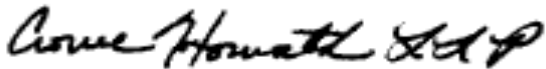
REPORT OF INDEPENDENT REGISTERED PUBLIC ACCOUNTING FIRM

Board of Directors and Shareholders
Consumers Bancorp, Inc.
Minerva, Ohio

We have audited the accompanying consolidated balance sheets of Consumers Bancorp, Inc. as of June 30, 2009 and 2008 and the related consolidated statements of income, changes in shareholders' equity, and cash flows for the years then ended. These financial statements are the responsibility of the Corporation's management. Our responsibility is to express an opinion on these financial statements based on our audits.

We conducted our audits in accordance with the standards of the Public Company Accounting Oversight Board (United States). Those standards require that we plan and perform the audit to obtain reasonable assurance about whether the consolidated financial statements are free of material misstatement. The Corporation is not required to have, nor were we engaged to perform, an audit of its internal control over financial reporting. Our audit included consideration of internal control over financial reporting as a basis for designing audit procedures that are appropriate in the circumstances, but not for the purpose of expressing an opinion on the effectiveness of the Corporation's internal control over financial reporting. Accordingly, we express no such opinion. An audit includes examining, on a test basis, evidence supporting the amounts and disclosures in the financial statements. An audit also includes assessing the accounting principles used and significant estimates made by management, as well as evaluating the overall consolidated financial statement presentation. We believe that our audits provide a reasonable basis for our opinion.

In our opinion, the consolidated financial statements referred to above present fairly, in all material respects, the financial position of Consumers Bancorp, Inc. as of June 30, 2009 and 2008 and the results of its operations and its cash flows for the years then ended, in conformity with U. S. generally accepted accounting principles.

A handwritten signature in black ink, appearing to read "Crowe Horwath LLP".

Crowe Horwath LLP

Cleveland, Ohio
September 14, 2009

CONSUMERS BANCORP, INC.
CONSOLIDATED BALANCE SHEETS
As of June 30, 2009 and 2008
(Dollar amounts in thousands, except per share data)

	2009	2008
ASSETS:		
Cash on hand and noninterest-bearing deposits in financial institutions	\$ 5,961	\$ 6,637
Federal funds sold and interest-bearing deposits in financial institutions.....	12,930	4,325
Total cash and cash equivalents	18,891	10,962
Certificate of deposits in financial institutions.....	2,012	—
Securities, available-for-sale	60,775	59,212
Federal bank and other restricted stocks, at cost	1,186	1,173
Total loans	160,141	152,350
Less allowance for loan losses	(1,992)	(1,709)
Net loans	158,149	150,641
Cash surrender value of life insurance	4,622	4,452
Premises and equipment, net.....	3,776	4,024
Intangible assets, net	411	572
Other real estate owned.....	181	—
Accrued interest receivable and other assets	1,859	2,041
Total assets	\$ 251,862	\$ 233,077
LIABILITIES:		
Deposits:		
Non-interest bearing demand	\$ 42,855	\$ 44,480
Interest bearing demand	12,570	13,298
Savings	58,196	52,490
Time	90,430	78,576
Total deposits	204,051	188,844
Short-term borrowings	15,055	11,892
Federal Home Loan Bank advances.....	9,373	10,601
Accrued interest payable and other liabilities	1,922	2,169
Total liabilities	230,401	213,506
Commitments and contingent liabilities.....	—	—
SHAREHOLDERS' EQUITY:		
Common shares, no par value; 2,500,000 shares authorized; 2,160,000 shares issued.....	4,869	4,869
Retained earnings	18,244	17,029
Treasury stock, at cost (130,442 common shares at June 30, 2009 and 2008).....	(1,659)	(1,659)
Accumulated other comprehensive income (loss)	7	(668)
Total shareholders' equity	21,461	19,571
Total liabilities and shareholders' equity	\$ 251,862	\$ 233,077

See accompanying notes to consolidated financial statements.

CONSUMERS BANCORP, INC.
CONSOLIDATED STATEMENTS OF INCOME
Years Ended June 30, 2009 and 2008
(Dollar amounts in thousands, except per share data)

	<u>2009</u>	<u>2008</u>
Interest income:		
Loans, including fees	\$ 10,065	\$ 10,754
Federal funds sold and interest-bearing deposits in financial institutions	78	111
Securities:		
Taxable	2,186	1,888
Tax-exempt.....	<u>771</u>	<u>725</u>
Total interest income.....	13,100	13,478
Interest expense:		
Deposits	3,013	3,910
Short-term borrowings	212	386
Federal Home Loan Bank advances.....	<u>328</u>	<u>332</u>
Total interest expense	3,553	4,628
Net interest income	9,547	8,850
Provision for loan losses	<u>579</u>	<u>430</u>
Net interest income after provision for loan losses.....	8,968	8,420
Other income:		
Service charges on deposit accounts	1,671	1,679
Debit card interchange income.....	447	407
Securities gains, net	185	26
Gain on other real estate owned	—	13
Bank owned life insurance income	170	162
Other	<u>142</u>	<u>181</u>
Total other income	2,615	2,468
Other expenses:		
Salaries and employee benefits	4,272	4,320
Occupancy and equipment	1,082	1,170
Data processing expenses.....	538	353
Professional and director fees	392	333
Federal Deposit Insurance Corporation assessments	328	40
Franchise taxes.....	217	221
Loan and collection expenses.....	217	123
Amortization of intangible	161	161
Telephone and communications	239	229
Debit card processing expenses	273	389
Other	<u>1,268</u>	<u>1,253</u>
Total other expenses	8,987	8,592
Income before income taxes	2,596	2,296
Income tax expense	<u>569</u>	<u>493</u>
Net income	<u>\$ 2,027</u>	<u>\$ 1,803</u>
Basic earnings per share	\$ 1.00	\$ 0.88

See accompanying notes to consolidated financial statements.

CONSUMERS BANCORP, INC.
CONSOLIDATED STATEMENTS OF CHANGES IN SHAREHOLDERS' EQUITY
Years Ended June 30, 2009 and 2008
(Dollar amounts in thousands, except per share data)

	<u>Common Shares</u>	<u>Retained Earnings</u>	<u>Treasury Stock</u>	<u>Accumulated Other Comprehensive Income (Loss)</u>	<u>Total Shareholders' Equity</u>
Balance, June 30, 2007	\$ 4,869	\$ 15,920	\$ (1,235)	\$ (772)	\$ 18,782
Comprehensive Income:					
Net income		1,803			1,803
Other comprehensive income.....				104	104
Total comprehensive income					1,907
Cash dividends declared (\$0.34 per share)		(694)			(694)
Purchase of 35,876 treasury shares			(424)		(424)
Balance, June 30, 2008	<u>4,869</u>	<u>17,029</u>	<u>(1,659)</u>	<u>(668)</u>	<u>19,571</u>
Comprehensive Income:					
Net income		2,027			2,027
Other comprehensive income.....				675	675
Total comprehensive income					2,702
Cash dividends declared (\$0.40 per share)		(812)			(812)
Balance, June 30, 2009	<u>\$ 4,869</u>	<u>\$ 18,244</u>	<u>\$ (1,659)</u>	<u>\$ 7</u>	<u>\$ 21,461</u>

See accompanying notes to consolidated financial statements.

CONSUMERS BANCORP, INC.
CONSOLIDATED STATEMENTS OF CASH FLOWS
Years Ended June 30, 2009 and 2008
(Dollar amounts in thousands, except per share data)

	2009	2008
Cash flows from operating activities:		
Net income.....	\$ 2,027	\$ 1,803
Adjustments to reconcile net income to net cash flows from operating activities:		
Depreciation.....	455	570
Securities amortization (accretion), net	73	(69)
Provision for loan losses	579	430
(Gain) loss on disposal of premises	(4)	15
Gain on sale of other real estate.....	—	(13)
Deferred income taxes	(105)	(126)
Gain on sale of securities	(185)	(26)
Stock dividend on FHLB stock.....	(13)	(27)
Intangible amortization	161	161
Increase in cash surrender value of life insurance	(170)	(162)
Change in:		
Accrued interest receivable.....	44	(29)
Accrued interest payable.....	(72)	23
Other assets and other liabilities	(280)	797
Net cash flows from operating activities	2,510	3,347
Cash flows from investing activities:		
Securities available-for-sale		
Purchases	(25,934)	(27,171)
Maturities, calls and principal pay downs.....	12,070	5,561
Proceeds from sales of available for sale securities	13,436	4,783
Net increase in certificates of deposit with other financial institutions	(2,012)	—
Net increase in loans	(8,286)	(10,785)
Acquisition of premises and equipment.....	(210)	(337)
Proceeds from sale/disposal of premises	7	1
Proceeds from sale of other real estate owned.....	24	1,332
Improvement to other real estate owned	(6)	—
Net cash flows from investing activities	(10,911)	(26,616)
Cash flows from financing activities:		
Net increase in deposit accounts	15,207	19,253
Proceeds from FHLB advances	—	10,500
Repayments of FHLB advances	(1,228)	(2,524)
Change in short-term borrowings	3,163	2,562
Dividends paid	(812)	(694)
Purchase of treasury stock	—	(424)
Net cash flows from financing activities	16,330	28,673
Increase in cash and cash equivalents	7,929	5,404
Cash and cash equivalents, beginning of year	10,962	5,558
Cash and cash equivalents, end of year	\$ 18,891	\$ 10,962
Supplemental noncash disclosures:		
Transfers from loans to repossessed assets	\$ 199	\$ 121
Self financed sale of other real estate	—	345

See accompanying notes to consolidated financial statements.

CONSUMERS BANCORP, INC.
NOTES TO CONSOLIDATED FINANCIAL STATEMENTS

June 30, 2009 and 2008

(Dollar amounts in thousands, except per share data)

NOTE 1—SUMMARY OF SIGNIFICANT ACCOUNTING POLICIES

Unless otherwise indicated, dollar amounts are in thousands, except per share data.

Principles of Consolidation: The consolidated financial statements include the accounts of Consumers Bancorp, Inc. (Corporation) and its wholly owned subsidiary, Consumers National Bank (Bank), together referred to as the Corporation. All significant intercompany transactions have been eliminated in the consolidation.

Nature of Operations: Consumers Bancorp, Inc. is a bank holding company headquartered in Minerva, Ohio that provides, through its banking subsidiary, a broad array of products and services throughout its primary market area of Stark, Columbiana, Carroll and contiguous counties in Ohio. The Bank's business involves attracting deposits from businesses and individual customers and using such deposits to originate commercial, mortgage and consumer loans in its primary market area.

Business Segment Information: Consumers Bancorp, Inc. is a bank holding company engaged in the business of commercial and retail banking, which accounts for substantially all of its revenues, operating income, and assets. Accordingly, all of its operations are reported in one segment, banking.

Use of Estimates: To prepare financial statements in conformity with U. S. generally accepted accounting principles, management makes estimates and assumptions based on available information. These estimates and assumptions affect the amounts reported in the financial statements and the disclosures provided, and actual results could differ. The allowance for loan losses, fair values of financial instruments, and determination of other-than-temporary impairment of securities are particularly subject to change.

Cash Flows: Cash and cash equivalents includes cash, deposits with other financial institutions with original maturities of less than 90 days and federal funds sold. Net cash flows are reported for customer loan and deposit transactions, interest bearing deposits in other financial institutions, and short-term borrowings. Cash paid for interest was \$3,625 and \$4,605 for the years ending June 30, 2009 and 2008. Cash paid for income taxes was \$725 and \$460 for the years ending June 30, 2009 and 2008.

Interest-Bearing Deposits in Other Financial Institutions: Interest-bearing deposits in other financial institutions mature within one year and are carried at cost.

Cash Reserves: The Bank is required by the Federal Reserve to maintain reserves consisting of cash on hand and non-interest bearing balances on deposit with the Federal Reserve Bank. The required reserve balance at June 30, 2009 and 2008 was \$1,897 and \$1,923, respectively.

Securities: Securities are generally classified into either held-to-maturity or available-for-sale categories. Held-to-maturity securities are those that the Corporation has the positive intent and ability to hold to maturity, and are reported at amortized cost. Available-for-sale securities are those that the Corporation may decide to sell if needed for liquidity, asset-liability management, or other reasons. Available-for-sale securities are reported at fair value, with unrealized gains or losses included in other comprehensive income as a separate component of equity, net of tax. Declines in the fair value of securities below their cost that are considered other-than-temporary are recorded in non-interest income as securities losses. Federal bank and other restricted stocks, such as Federal Home Loan Bank stock, are carried at cost.

Realized gains or losses on securities sold are determined based on the amortized cost of the specific security sold. Interest and dividends on securities, including amortization of premiums and accretion of discounts computed under a system materially consistent with the level yield method, are recognized as interest income. Prepayment activity on mortgage-backed securities is affected primarily by changes in interest rates. Yields on mortgage-backed securities are adjusted as prepayments occur through changes to premium amortization or discount accretion.

Securities are reviewed at least quarterly for indicators of other-than-temporary impairment. This determination requires significant judgment. In estimating other-than-temporary impairment, management evaluates: the length of time and extent the fair value has been less than cost, the expected cash flows of the security, the financial condition and near term prospects of the issuer, and whether the Corporation has the intent to sell the security or the likelihood the Corporation will be required to sell the security at an unrealized loss position prior to any anticipated recovery in fair value, which may be maturity. Declines in the fair value of securities below their cost that are other-than-temporary are reflected as realized losses. Once an other-than-temporary impairment is recorded, future cash flows are re-allocated between interest and principal cash flows to provide for a level-yield on the security.

CONSUMERS BANCORP, INC.
NOTES TO CONSOLIDATED FINANCIAL STATEMENTS—(continued)

June 30, 2009 and 2008

(Dollar amounts in thousands, except per share data)

Federal Home Loan Bank (FHLB) stock: The Bank is a member of the FHLB system. Members are required to own a certain amount of stock based on the level of borrowings and other factors, and may invest in additional amounts. FHLB stock, included with Federal bank and other restricted stocks in the Consolidated Balance Sheet, is carried at cost, classified as a restricted security and periodically evaluated for impairment based on ultimate recovery of par value. Since this stock is viewed as a long-term investment, impairment is based on ultimate recovery of par value. Both cash and stock dividends are reported as income.

Loans: Loans are reported at the principal balance outstanding, net of unearned income, deferred loan fees and costs, and an allowance for loan losses. Interest income is reported on the interest method and includes amortization of net deferred loan fees and costs over the loan term. Interest income on mortgage and commercial loans is discontinued at the time the loan is 120 days delinquent unless the loan is well-secured and in the process of collection. Consumer loans are typically charged off no later than 90 days past due. Past due status is determined by the contractual terms of the loan. In all cases, loans are placed on non-accrual or charged-off at an earlier date if collection of principal or interest is considered doubtful.

All interest accrued but not received on loans placed on non-accrual is reversed against interest income. Interest received on such loans is accounted for on the cash-basis or cost-recovery method, until qualifying for return to accrual. Loans are returned to accrual status when the customer has exhibited the ability to repay and demonstrated this ability over a six month period and future payments are reasonably assured.

Loan Commitments and Related Financial Instruments: Financial instruments include off-balance sheet credit instruments, such as commitments to make loans and commercial letters of credit, issued to meet customer financing needs. The face amount for these items represents the exposure to loss, before considering customer collateral or ability to repay. Such financial instruments are recorded when funded.

Concentrations of Credit Risk: The Bank grants consumer, real estate and commercial loans primarily to borrowers in Stark, Columbiana and Carroll counties. Automobiles and other consumer assets, business assets and residential and commercial real estate secure most loans.

Allowance for Loan Losses: The allowance for loan losses is a valuation allowance for probable incurred losses, increased by the provision for loan losses and decreased by charge-offs, less recoveries. Management estimates the allowance balance required based on past loan loss experience, probable and incurred losses in the portfolio, information about specific borrower situations and estimated collateral values, economic conditions and other factors. Allocations of the allowance may be made for specific loans, but the entire allowance is available for any loan that, in management's judgment, should be charged-off.

Loan impairment is reported when full payment under the loan terms is not expected. Impairment is evaluated in total for smaller-balance loans of similar nature such as residential mortgage, consumer loans and on an individual loan basis for other loans. If a loan is impaired, a portion of the allowance is allocated so the loan is reported, net, at the present value of estimated future cash flows using the loan's existing rate or at the fair value of collateral if repayment is expected from the collateral. Loans are evaluated for impairment when payments are delayed, typically 90 days or more, or when it is probable that not all principal and interest amounts will be collected according to the original terms of the loan.

Cash Surrender Value of Life Insurance: The Bank has purchased single-premium life insurance policies to insure the lives of current and former participants in the salary continuation plan. As of June 30, 2009, the Bank had policies with total death benefits of \$10,225 and total cash surrender values of \$4,622. As of June 30, 2008, the Bank had policies with total death benefits of \$10,120 and total cash surrender values of \$4,452. Bank owned life insurance is recorded at the amount that can be realized under the insurance contract at the balance sheet date, which is the cash surrender value adjusted for other changes or other amounts due that are probable at settlement. Tax-exempt income is recognized from the periodic increases in cash surrender value of these policies. The amount included in income (net of policy commissions and mortality costs) was \$170, and \$162 for the years ended June 30, 2009 and 2008, respectively.

Premises and Equipment: Premises and equipment are stated at cost less accumulated depreciation. Depreciation is computed primarily using the straight-line method over the estimated useful life of the owned asset and, for leasehold improvements, generally over the lesser of the remaining term of the lease facility or the estimated economic life of the improvement. Useful lives range from three years for software to thirty-nine and one-half years for buildings.

Intangible Assets: Core deposit intangible is recorded at cost and is amortized over an estimated life of 12 years on a straight line method. Intangibles are assessed annually for impairment and written down as necessary.

CONSUMERS BANCORP, INC.
NOTES TO CONSOLIDATED FINANCIAL STATEMENTS—(continued)

June 30, 2009 and 2008

(Dollar amounts in thousands, except per share data)

Long-term Assets: Premises and equipment, core deposit and other intangible assets and other long-term assets are reviewed for impairment when events indicate their carrying amount may not be recoverable from future undiscounted cash flows. If impaired, the assets are recorded at fair value.

Other Real Estate Owned: Real estate properties acquired through, or in lieu of, loan foreclosure are initially recorded at fair value less costs to sell at the date of acquisition, establishing a new cost basis. Any reduction to fair value from the carrying value of the related loan at the time of acquisition is accounted for as a loan loss. After acquisition, a valuation allowance reduces the reported amount to the lower of the initial amount or fair value less costs to sell. Expenses, gains and losses on disposition, and changes in the valuation allowance are reported as a charge to income.

Repurchase Agreements: Substantially all repurchase agreement liabilities, which are classified as short-term borrowings, represent amounts advanced by various customers. Securities are pledged to cover these liabilities, which are not covered by federal deposit insurance.

Profit Sharing Plan: The Bank maintains a 401(k) profit sharing plan covering all eligible employees. Contributions are made and expensed annually.

Income Taxes: The Corporation files a consolidated federal income tax return. Income tax expense is the sum of the current-year income tax due or refundable and the change in deferred tax assets and liabilities. Deferred tax assets and liabilities are the expected future tax consequences of temporary differences between the carrying amounts and tax basis of assets and liabilities, computed using enacted tax rates. A valuation allowance, if needed, reduces deferred tax assets to the amount expected to be realized. The Corporation applies a more likely than not recognition threshold for all tax uncertainties in accordance with FASB Interpretation 48, *Accounting for Uncertainty in Income Taxes* (“FIN 48”). A tax position is recognized as a benefit only if it is more likely than not the position would be sustained in a tax examination, with a tax examination being presumed to occur. The amount recognized is the largest amount of tax benefit greater than 50% likely of being realized on examination. The Corporation recognizes interest and/or penalties related to income tax matters in income tax expense.

Loss Contingencies: Loss contingencies, including claims and legal actions arising in the ordinary course of business, are recorded as liabilities when the likelihood of loss is probable and an amount or range of loss can be reasonably estimated. Management does not believe there are such matters that will have a material effect on the financial statements.

Earnings and Dividends Declared per Share: Earnings per common share are computed based on the weighted average common shares outstanding. The weighted average number of common shares outstanding was 2,029,558 and 2,043,489 for the years ended June 30, 2009 and 2008, respectively. The Corporation’s capital structure contains no dilutive securities.

Comprehensive Income (loss): Comprehensive income (loss) consists of net income and other comprehensive income (loss). Other comprehensive income (loss) includes unrealized gains and losses on securities available-for-sale.

Fair Value of Financial Instruments: Fair values of financial instruments are estimated using relevant market information and other assumptions, as more fully disclosed in a separate note. Fair value estimates involve uncertainties and matters of significant judgment regarding interest rates, credit risk, discounted cash flows, prepayments, and other factors, especially in the absence of broad markets for particular items. Changes in assumptions or in market conditions could significantly affect the estimates. Fair value measurements are classified within one of three levels in a valuation hierarchy based upon the transparency of inputs to the valuation of an asset or liability as of the measurement date. The three levels are defined as follows:

Level 1: Quoted prices (unadjusted) for identical assets or liabilities in active markets that the entity has the ability to access as of the measurement date.

Level 2: Significant other observable inputs other than Level 1 prices such as quoted prices for similar assets or liabilities; quoted prices in markets that are not active; or other inputs that are observable or can be corroborated by observable market data.

Level 3: Significant unobservable inputs that reflect a company’s own assumptions about the assumptions that market participants would use in pricing an asset or liability. Valuation techniques include use of discounted cash flow models and similar techniques.

CONSUMERS BANCORP, INC.
NOTES TO CONSOLIDATED FINANCIAL STATEMENTS—(continued)

June 30, 2009 and 2008

(Dollar amounts in thousands, except per share data)

Dividend Restrictions: Banking regulations require maintaining certain capital levels and may limit the dividends paid by the Bank to the holding company or by the holding company to shareholders. As of June 30, 2009 the Bank could, without prior approval, declare a dividend of approximately \$1,925.

Subsequent Events: Management has evaluated events occurring subsequent to the balance sheet date through September 14, 2009 the financial statement issuance date, determining no events require adjustment to or additional disclosure in the consolidated financial statements.

Adoption of New Accounting Standards: In September 2006, the Financial Accounting Standards Board (FASB) issued Statement No. 157, *Fair Value Measurements*. This Statement defines fair value, establishes a framework for measuring fair value and expands disclosures about fair value measurements. This Statement establishes a fair value hierarchy about the assumptions used to measure fair value and clarifies assumptions about risk and the effect of a restriction on the sale or use of an asset. The standard is effective for fiscal years beginning after November 15, 2007. In February 2008, the FASB issued Staff Position (FSP) 157-2, *Effective Date of FASB Statement No. 157*. This FSP delays the effective date of FAS 157 for all nonfinancial assets and nonfinancial liabilities, except those that are recognized or disclosed at fair value on a recurring basis (at least annually) to fiscal years beginning after November 15, 2008, and interim periods within those fiscal years. The impact of adoption was not material. In October 2008, the FASB issued FSP 157-3, *Determining the Fair Value of a Financial Asset When the Market for That Asset is Not Active*. This FSP clarifies the application of FAS 157 in a market that is not active. The impact of adoption was not material.

In April 2009, the FASB issued Staff Position (FSP) No. 157-4, *Determining Fair Value When the Volume and Level of Activity for the Asset and Liability Have Significantly Decreased and Identifying Transactions That Are Not Orderly*. This FSP emphasizes that even if there has been a significant decrease in the volume and level of activity, the objective of a fair value measurement remains the same. Fair value is the price that would be received to sell an asset or paid to transfer a liability in an orderly transaction (that is, not a forced liquidation or distressed sale) between market participants. The FSP provides a number of factors to consider when evaluating whether there has been a significant decrease in the volume and level of activity for an asset or liability in relation to normal market activity. In addition, when transactions or quoted prices are not considered orderly, adjustments to those prices based on the weight of available information may be needed to determine the appropriate fair value. The FSP also requires increased disclosures. This FSP is effective for interim and annual reporting periods ending after June 15, 2009. The adoption of this FSP did not have a material impact on the results of operations or financial position.

In February 2007, the FASB issued Statement No. 159, *The Fair Value Option for Financial Assets and Financial Liabilities*. The standard provides companies with an option to report selected financial assets and liabilities at fair value and establishes presentation and disclosure requirements designed to facilitate comparisons between companies that choose different measurement attributes for similar types of assets and liabilities. The new standard was effective for the Corporation on July 1, 2008. The Corporation did not elect the fair value option for any financial assets or financial liabilities as of July 1, 2008.

In April 2009, the FASB issued Staff Position (FSP) No. 115-2 and No. 124-2, *Recognition and Presentation of Other-Than-Temporary Impairments*, which amends existing guidance for determining whether impairment is other-than-temporary (OTTI) for debt securities. The FSP requires an entity to assess whether it intends to sell, or it is more likely than not that it will be required to sell a security in an unrealized loss position before recovery of its amortized cost basis. If either of these criteria is met, the entire difference between amortized cost and fair value is recognized in earnings. For securities that do not meet the aforementioned criteria, the amount of impairment recognized in earnings is limited to the amount related to credit losses, while impairment related to other factors is recognized in other comprehensive income. Additionally, the FSP expands and increases the frequency of existing disclosures about other-than-temporary impairments for debt and equity securities. This FSP is effective for interim and annual reporting periods ending after June 15, 2009. The adoption of this FSP did not have a material impact on the Corporation's results of operations or financial position.

In April 2009, the FASB issued FSP No. 107-1 and APB 28-1, *Interim Disclosures about Fair Value of Financial Instruments*. This FSP amends FASB Statement No. 107, *Disclosures about Fair Value of Financial Instruments*, to require disclosures about fair value of financial instruments for interim reporting periods of publicly traded companies that were previously only required in annual financial statements. This FSP is effective for interim reporting periods ending after June 15, 2009. The adoption of this FSP at June 30, 2009 did not have a material impact on the results of operations or financial position as it only required disclosures which are included in Note 13.

CONSUMERS BANCORP, INC.
NOTES TO CONSOLIDATED FINANCIAL STATEMENTS—(continued)

June 30, 2009 and 2008

(Dollar amounts in thousands, except per share data)

FASB Statement No. 165, *Subsequent Events*, establishes general standards of accounting for and disclosure of subsequent events. Subsequent events are events that occur after the balance sheet date but before financial statements are issued or are available to be issued. The Statement is effective for interim or annual periods ending after June 15, 2009. The impact of this new Statement was not material to the Corporation's consolidated financial statements. Management has evaluated events occurring subsequent to the balance sheet date through the financial statement issuance date of September 14, 2009 determining no events require adjustment to or additional disclosure in the financial statements.

Effect of Newly Issued But Not Yet Effective Accounting Standards: FASB Statement No. 166, *Accounting for Transfers of Financial Assets*, is a revision to FASB Statement 140 that is the primary source of accounting guidance for transfers of financial assets and securitization transactions. Statement No. 166 will require more information about transfers of financial assets, including securitization transactions, and where entities have continuing exposure to the risks related to transferred financial assets. It eliminates the concept of a "qualifying special-purpose entity," changes the requirements for derecognizing financial assets, and requires additional disclosures. The new Statement will be effective at the start of the Corporation's first fiscal year beginning after November 15, 2009. The impact of adoption of this Statement is not expected to be material to the Company's consolidated financial statements.

FASB Statement No. 167, *Amendments to FASB Interpretation No. 46R*, amends FIN 46(R) to replace the quantitative-based risks and rewards calculation for determining which enterprise, if any, has a controlling financial interest in a variable interest entity with a qualitative approach focused on identifying which enterprise has the power to direct the activities of a variable interest entity (VIE) that most significantly impact the entity's economic performance and (1) the obligation to absorb losses of the entity or (2) the right to receive benefits from the entity. Unlike FIN 46 (R), this Statement requires ongoing reconsideration of whether (1) an entity is a VIE and (2) an enterprise is the primary beneficiary of a VIE. It is expected that the amendments will result in more entities consolidating VIEs that previously were not consolidated. The Statement will also require additional disclosures about an enterprise's involvement in variable interest entities. The new Statement will be effective at the start of the Corporation's first fiscal year beginning after November 15, 2009. The impact of adoption of this Statement is not expected to be material to the Company's consolidated financial statements.

On June 29, 2009, Statement No. 168 was issued to replace the guidance in FASB Statement No. 162, *The Hierarchy of Generally Accepted Accounting Principles (Statement No. 162)*, and identifies the FASB Accounting Standards Codification (Codification) as the single source of authoritative U.S. Generally Accepted Accounting Principles (GAAP) recognized by the FASB to be applied by nongovernmental entities. The Codification reorganizes all previous GAAP pronouncements into roughly 90 accounting topics and displays all topics using a consistent structure. All existing standards that were used to create the Codification will be superseded, replacing the previous references to specific Statements of Financial Accounting Standards (SFAS) with numbers used in the Codification's structural organization. Statement No. 168 is effective for interim and annual periods ending after September 15, 2009. After September 15, only one level of authoritative GAAP will exist, other than guidance issued by the Securities and Exchange Commission (SEC). All other accounting literature excluded from the Codification will be considered non-authoritative. The adoption of the Codification does not have a material impact on the Corporation's condensed consolidated financial statements.

Reclassifications: Certain reclassifications have been made to the June 30, 2008 financial statements to be comparable to the June 30, 2009 presentation.

CONSUMERS BANCORP, INC.
NOTES TO CONSOLIDATED FINANCIAL STATEMENTS—(continued)

June 30, 2009 and 2008

(Dollar amounts in thousands, except per share data)

NOTE 2—SECURITIES

The following table sets forth certain information regarding the amortized cost and fair value of the Corporation's available-for-sale securities at the dates indicated.

Description of Securities	Amortized Cost	Gross Unrealized Gains	Gross Unrealized Losses	Fair Value
June 30, 2009				
Obligations of government sponsored entities	\$ 14,278	\$ 385	\$ (1)	\$ 14,662
Obligations of state and political subdivisions	18,171	62	(608)	17,625
Mortgage-backed securities - residential	27,334	810	(12)	28,132
Trust preferred security	982	—	(626)	356
Total securities	<u>\$ 60,765</u>	<u>\$ 1,257</u>	<u>\$ (1,247)</u>	<u>\$ 60,775</u>
June 30, 2008				
Obligations of government sponsored entities	\$ 10,133	\$ 160	\$ (44)	\$ 10,249
Obligations of state and political subdivisions	18,461	19	(582)	17,898
Mortgage-backed securities - residential	30,645	85	(406)	30,324
Trust preferred security	985	—	(244)	741
Total securities	<u>\$ 60,224</u>	<u>\$ 264</u>	<u>\$ (1,276)</u>	<u>\$ 59,212</u>

Proceeds from sales of all equity and debt securities during 2009 and 2008 were \$13,436 and \$4,783, respectively. During 2009, gross gains of \$238 and gross losses of \$53 were recognized. During 2008, gross gains of \$35 and gross losses of \$9 were recognized.

The amortized cost and fair values of debt securities available-for-sale at June 30, 2009 by contractual maturity are shown below. Expected maturities will differ from contractual maturities because borrowers may have the right to call or prepay obligations with or without call or prepayment penalties. Securities not due at a single maturity date, primarily mortgage-backed securities and the trust preferred security are shown separately.

	Amortized Cost	Fair Value
Due in one year or less	\$ 7,312	\$ 7,477
Due after one year through five years	7,002	7,221
Due after five years through ten years	2,251	2,184
Due after ten years	15,884	15,405
Total	<u>32,449</u>	<u>32,287</u>
Mortgage-backed securities - residential	27,334	28,132
Trust preferred security	982	356
Total	<u>\$ 60,765</u>	<u>\$ 60,775</u>

Securities with a carrying value of approximately \$39,901 and \$27,560 were pledged at June 30, 2009 and 2008, respectively, to secure public deposits and commitments as required or permitted by law. At June 30, 2009, available for sale securities included municipal securities issued by Farmersville Texas school district that are insured by Permanent School Fund Guarantee with an aggregate book value of \$2,175, or 10.1%, of shareholders' equity. Other than this issuance, there were no other holdings of securities of any one issuer, other than the U.S. government and its agencies and corporations, with an aggregate book value which exceeds 10% of shareholders' equity.

CONSUMERS BANCORP, INC.
NOTES TO CONSOLIDATED FINANCIAL STATEMENTS—(continued)

June 30, 2009 and 2008

(Dollar amounts in thousands, except per share data)

Securities with unrealized losses at June 30, 2009 and 2008, aggregated by investment category and length of time that individual securities have been in a continuous unrealized loss position, are as follows:

<u>Description of Securities</u>	<u>Less than 12 Months</u>		<u>12 Months or more</u>		<u>Total</u>	
	<u>Fair Value</u>	<u>Unrealized Loss</u>	<u>Fair Value</u>	<u>Unrealized Loss</u>	<u>Fair Value</u>	<u>Unrealized Loss</u>
June 30, 2009						
Obligations of government sponsored entities	\$ 532	\$ (1)	\$ —	\$ —	\$ 532	\$ (1)
Obligations of states and political subdivisions	8,425	(267)	4,277	(341)	12,702	(608)
Mortgage-backed securities - residential	—	—	135	(12)	135	(12)
Trust preferred security	—	—	356	(626)	356	(626)
Total temporarily impaired	<u>\$ 8,957</u>	<u>\$ (268)</u>	<u>\$ 4,768</u>	<u>\$ (979)</u>	<u>\$ 13,725</u>	<u>\$ (1,247)</u>

<u>Description of Securities</u>	<u>Less than 12 Months</u>		<u>12 Months or more</u>		<u>Total</u>	
	<u>Fair Value</u>	<u>Unrealized Loss</u>	<u>Fair Value</u>	<u>Unrealized Loss</u>	<u>Fair Value</u>	<u>Unrealized Loss</u>
June 30, 2008						
Obligations of government sponsored entities	\$ 1,717	\$ (44)	\$ —	\$ —	\$ 1,717	\$ (44)
Obligations of states and political subdivisions	15,403	(482)	887	(100)	16,290	(582)
Mortgage-backed securities - residential	22,464	(386)	665	(20)	23,129	(406)
Trust preferred security	741	(244)	—	—	741	(244)
Total temporarily impaired	<u>\$ 40,325</u>	<u>\$ (1,156)</u>	<u>\$ 1,552</u>	<u>\$ (120)</u>	<u>\$ 41,877</u>	<u>\$ (1,276)</u>

Management evaluates securities for other-than-temporary impairment (OTTI) on a quarterly basis, and more frequently when economic or market conditions warrant such an evaluation. The securities portfolio is evaluated for OTTI by segregating the portfolio into two general segments and applying the appropriate OTTI model. Investment securities are generally evaluated for OTTI under Statement of Financial Accounting Standards (SFAS) No. 115, *Accounting for Certain Investments in Debt and Equity Securities*. However, the trust preferred security is evaluated using the model outlined in EITF Issue No. 99-20, *Recognition of Interest Income and Impairment on Purchased Beneficial Interests and Beneficial Interests that Continue to be Held by a Transfer in Securitized Financial Assets*.

In determining OTTI under the SFAS No. 115 model, management considers many factors, including: (1) the length of time and the extent to which the fair value has been less than cost, (2) the financial condition and near-term prospects of the issuer, (3) whether the market decline was affected by macroeconomic conditions, and (4) whether the entity has the intent to sell the debt security or more likely than not will be required to sell the debt security before its anticipated recovery. The assessment of whether an other-than-temporary decline exists involves a high degree of subjectivity and judgment and is based on the information available to management at a point in time.

The second segment of the portfolio uses the OTTI guidance provided by EITF 99-20. Under the EITF 99-20 model, the present value of the remaining cash flows as estimated at the preceding evaluation date are compared to the current expected remaining cash flows. An OTTI is deemed to have occurred if there has been an adverse change in the remaining expected future cash flows.

As of June 30, 2009, the Corporation's security portfolio consisted of \$60,775, of which \$13,725 were in an unrealized loss position. The majority of unrealized losses are related to the Corporation's obligations of states and political subdivisions and the trust preferred security, as discussed below:

CONSUMERS BANCORP, INC.
NOTES TO CONSOLIDATED FINANCIAL STATEMENTS—(continued)
June 30, 2009 and 2008

(Dollar amounts in thousands, except per share data)

Obligations of states and political subdivisions

At June 30, 2009, approximately 87.9% of the obligations of states and political subdivisions held by the Corporation were general obligation bonds and 12.1% were revenue bonds. The decline in fair value of these securities is mainly attributable to temporary illiquidity and the turmoil within the municipal bond insurance industry, not credit quality. The recent credit concerns within the municipal bond insurance industry have reduced the liquidity of these securities and, as a result, have caused a decline in the value for some municipal securities. Management monitors the financial data of the individual municipalities to insure they meet minimum credit standards. Therefore, since the Corporation does not intend to sell these securities and it is not likely the Corporation will be required to sell these securities at an unrealized loss position prior to any anticipated recovery in fair value, which may be maturity, management does not believe there is any other-than-temporary impairment related to these securities at June 30, 2009.

Trust Preferred Security

The Corporation's unrealized loss on the trust preferred security related to an investment in a pooled trust preferred security issued by other financial institutions and insurance companies. The decline in fair value is primarily attributable to temporary illiquidity and the financial crisis affecting these markets and not necessarily the expected cash flows of the individual security. Due to the illiquidity in the market, it is unlikely the Corporation would be able to recover its investment in this security if the Corporation sold the security at this time.

Our analysis of this investment falls within the scope of EITF 99-20 and includes \$982 book value of a pooled trust preferred security (CDO). This security was rated high quality at inception, but at June 30, 2009, Moody's rated this security as Ca, which is defined as highly speculative. The issuers in this security are primarily banks and a limited number of insurance companies. The Corporation uses the OTTI evaluation model to compare the present value of expected cash flows to the previous estimate to ensure there are no adverse changes in cash flows during the period. The OTTI model considers the structure and term of the CDO and the financial condition of the underlying issuers. Specifically, the model details interest rates, principal balances of note classes and underlying issuers, the timing and amount of interest and principal payments of the underlying issuers, and the allocation of the payments to the note classes. The current estimate of expected cash flows is based on the most recent trustee reports and any other relevant market information including announcements of interest payment deferrals or defaults of underlying trust preferred securities. Assumptions used in the model include expected future default rates and prepayments. We assume no recoveries on defaults and treat all interest payment deferrals as defaults. In addition we use the model to "stress" the CDO, or make assumptions more severe than expected activity, to determine the degree to which assumptions could deteriorate before the CDO could no longer fully support repayment of the Corporation's note class. Upon completion of the June 30, 2009 analysis, there were no adverse changes in the expected cash flows during the period that would indicate OTTI. Therefore, since the Corporation does not intend to sell the security and it is not likely the Corporation will be required to sell the security at an unrealized loss position prior to any anticipated recovery in fair value, which may be maturity, management does not believe there is any other-than-temporary impairment from this security at June 30, 2009. Also, management has reviewed this security and these conclusions with an independent third party. However, if there is further deterioration in the underlying collateral of this security, other-than-temporary impairments may occur in future periods.

CONSUMERS BANCORP, INC.
NOTES TO CONSOLIDATED FINANCIAL STATEMENTS—(continued)
June 30, 2009 and 2008

(Dollar amounts in thousands, except per share data)

NOTE 3—LOANS

Major classifications of loans were as follows as of June 30:

	<u>2009</u>	<u>2008</u>
Real estate—mortgage	\$ 49,130	\$ 50,779
Real estate—construction.....	6,907	6,404
Commercial, financial and agricultural	98,636	89,454
Installment loans to individuals.....	5,724	5,942
	<u>160,397</u>	<u>152,579</u>
Deferred loan fees and costs.....	(256)	(229)
Allowance for loan losses	(1,992)	(1,709)
Net loans	<u>\$ 158,149</u>	<u>\$ 150,641</u>

The changes in the allowance for loan losses consists of the following for the years ended June 30:

	<u>2009</u>	<u>2008</u>
Balance at beginning of year.....	\$ 1,709	\$ 1,381
Provision	579	430
Charge-offs	(400)	(205)
Recoveries.....	104	103
Balance at end of year.....	<u>\$ 1,992</u>	<u>\$ 1,709</u>

Impaired loans were as follows as of June 30:

	<u>2009</u>	<u>2008</u>
Total impaired loans	\$ 2,231	\$ 1,270
Amount of allowance for loan losses allocated	344	241

As of June 30, 2009, all impaired loans had a specific allowance for loan loss allocation or had been charged down to the realizable value.

	<u>2009</u>	<u>2008</u>
Average of impaired loans during the year	\$ 1,854	\$ 1,019
Interest income recognized during impairment.....	42	31
Cash-basis interest income recognized	42	31

Nonperforming loans were as follows:

	<u>2009</u>	<u>2008</u>
Loans past due over 90 days and still accruing	\$ 328	\$ —
Loans on non-accrual	2,476	1,433
Increase in interest income if loans had been on accrual.....	175	82

The Bank has granted loans to certain of its executive officers, directors and their affiliates. A summary of activity during the year ended June 30, 2009 of related party loans were as follows:

	<u>2009</u>
Principal balance at beginning of year.....	\$ 1,816
New loans	283
Repayments	(290)
Principal balance at end of year.....	<u>\$ 1,809</u>

CONSUMERS BANCORP, INC.
NOTES TO CONSOLIDATED FINANCIAL STATEMENTS—(continued)
June 30, 2009 and 2008
(Dollar amounts in thousands, except per share data)

NOTE 4—PREMISES AND EQUIPMENT

Major classifications of premises and equipment were as follows as of June 30:

	<u>2009</u>	<u>2008</u>
Land	\$ 953	\$ 953
Land improvements.....	327	327
Building and leasehold improvements	3,298	3,281
Furniture, fixture and equipment.....	<u>5,060</u>	<u>5,314</u>
Total premises and equipment.....	9,638	9,875
Accumulated depreciation and amortization	<u>(5,862)</u>	<u>(5,851)</u>
Premises and equipment, net.....	<u>\$ 3,776</u>	<u>\$ 4,024</u>

Depreciation was \$455 and \$570 for the years ended June 30, 2009 and 2008, respectively.

The Corporation is obligated under non-cancelable operating leases for facilities and equipment. The approximate minimum annual rentals and commitments under these non-cancelable agreements and leases with remaining terms in excess of one year are as follows:

2010.....	97
2011.....	35
2012.....	33
2013.....	33
2014.....	33
Thereafter	<u>50</u>
	<u>\$ 281</u>

Rent expense incurred during the fiscal years ended June 30, 2009 and 2008 was \$96 for each year.

During the 2006 fiscal year, Consumers National Bank entered into an operating lease agreement for the Malvern branch location. The lessor of the property is a member of the Corporation's Board of Directors. The initial term of the lease is a period of ten years. The base rent through the end of the fifth year is one percent of the total Project Cost, as defined in the lease agreement. At the beginning of year six, the rent to be paid shall be increased in accordance with the change in the Consumers Price Index. For the next five years, the estimated annual lease expense is \$33 per year.

NOTE 5—INTANGIBLE ASSETS

The following summarizes the original balance and accumulated amortization of core deposit intangible assets at June 30, 2009 and 2008:

	<u>2009</u>	<u>2008</u>
Original balance	\$ 1,927	\$ 1,927
Less: accumulated amortization	<u>1,516</u>	<u>1,355</u>
Net balance, June 30.....	<u>\$ 411</u>	<u>\$ 572</u>

Amortization expense for the years ended June 30, 2009 and 2008 was \$161 for each year. Amortization expense is estimated to be \$161 for each of the next two years and \$89 in year three.

CONSUMERS BANCORP, INC.
NOTES TO CONSOLIDATED FINANCIAL STATEMENTS—(continued)
June 30, 2009 and 2008
(Dollar amounts in thousands, except per share data)

NOTE 6—DEPOSITS

The aggregate amount of time deposits, each with a minimum denomination of \$100,000 was \$31,007 and \$23,715 as of June 30, 2009 and 2008, respectively.

Scheduled maturities of time deposits at June 30, 2009 were as follows:

2010	\$ 61,006
2011	21,378
2012	3,117
2013	3,420
2014	1,052
Thereafter	457
	<u>\$ 90,430</u>

Related party deposits totaled \$3,700 as of June 30, 2009 and \$3,864 as of June 30, 2008.

NOTE 7—SHORT-TERM BORROWINGS

Short-term borrowings consisted of repurchase agreements. Repurchase agreements are financing arrangements. Physical control is maintained for all securities pledged to secure repurchase agreements. Information concerning all short-term borrowings at June 30, maturing in less than one year is summarized as follows:

	<u>2009</u>	<u>2008</u>
Balance at June 30.....	\$ 15,055	\$ 11,892
Average balance during the year	14,327	10,918
Maximum month-end balance.....	16,183	23,519
Average interest rate during the year	1.48%	3.54%
Weighted average rate June 30.....	0.50%	2.22%

Repurchase agreements mature daily. The Bank has pledged obligations of government sponsored entities and mortgage-backed securities with a carrying value of \$15,730 and \$16,750 at June 30, 2009 and 2008, respectively, as collateral for the repurchase agreements. Total interest expense on short-term borrowings was \$212 and \$386 for the years ended June 30, 2009 and 2008, respectively.

CONSUMERS BANCORP, INC.
NOTES TO CONSOLIDATED FINANCIAL STATEMENTS—(continued)
June 30, 2009 and 2008
(Dollar amounts in thousands, except per share data)

NOTE 8—FEDERAL HOME LOAN BANK ADVANCES

A summary of Federal Home Loan Bank (FHLB) advances were as follows:

<u>Advance Type</u>	<u>Maturity</u>	<u>Term</u>	<u>Interest Rate</u>	<u>Balance June 30, 2009</u>	<u>Balance June 30, 2008</u>
Interest-only, single maturity	10/02/2008	Fixed	4.80	\$ —	\$ 1,000
Interest-only, single maturity	01/15/2010	Fixed	2.96	625	625
Interest-only, single maturity	01/28/2010	Fixed	2.92	250	250
Principal and interest, mortgage matched	07/01/2010	Fixed	6.90	13	24
Principal and interest, mortgage matched	10/01/2010	Fixed	7.00	15	30
Principal and interest, mortgage matched	12/01/2010	Fixed	6.10	82	133
Interest-only, single maturity	01/18/2011	Fixed	3.14	625	625
Interest-only, single maturity	01/24/2011	Fixed	3.09	500	500
Interest-only, single maturity	07/22/2011	Fixed	3.24	500	500
Interest-only, single maturity	01/24/2012	Fixed	3.37	500	500
Interest-only, single maturity	07/24/2012	Fixed	3.50	500	500
Principal and interest, mortgage matched	04/01/2014	Fixed	2.54	219	327
Interest-only, putable	12/07/2017	Fixed	3.24	5,000	5,000
Principal and interest, mortgage matched	04/01/2019	Fixed	4.30	544	587
				<u>\$ 9,373</u>	<u>\$10,601</u>

Each fixed rate advance has a prepayment penalty equal to the present value of 100% of the lost cash flow based upon the difference between the contract rate on the advance and the current rate on the new advance. The \$5 million putable advance with the maturity date of December 7, 2017 can be called, at the option of the FHLB, on December 7, 2010 and then quarterly thereafter until maturity. The following table is a summary of the scheduled principal payments for all advances:

<u>Twelve Months Ending June 30</u>	<u>Principal Payments</u>
2010	\$ 1,089
2011	1,255
2012	1,089
2013	579
2014	69
Thereafter	5,292
	<u>\$ 9,373</u>

Pursuant to collateral agreements with the FHLB, advances are secured by all the stock invested in the FHLB and certain qualifying first mortgage loans. As of June 30, 2009, the Bank could borrow a total of \$24,284 in advances based on the amount of FHLB stock owned. Qualifying first mortgage loans available to secure FHLB advances totaled approximately \$33,209 and \$33,180 at June 30, 2009 and 2008, respectively.

CONSUMERS BANCORP, INC.
NOTES TO CONSOLIDATED FINANCIAL STATEMENTS—(continued)

June 30, 2009 and 2008

(Dollar amounts in thousands, except per share data)

NOTE 9—EMPLOYEE BENEFIT PLANS

The Bank has a 401(k) savings and retirement plan available for substantially all eligible employees. Under the plan, the Bank is required to match each participant's voluntary contribution to the plan but not to exceed 4% of the individual's compensation. Amounts charged to operations were \$111 and \$103, for the years ended June 30, 2009 and 2008, respectively.

The Bank has adopted a Salary Continuation Plan (the Plan) to encourage Bank executives to remain employees of the Bank. The Plan provides such executives (and, in the event of the executive's death, surviving beneficiary) with 180 months of salary continuation payments equal to a certain percentage of an executive's average compensation, as defined within each agreement, for the three full calendar years prior to Normal Retirement Age. For purposes of the Plan, "Normal Retirement Age" means the executive's 65th birthday. Vesting under the Plan commences at age 50 and is prorated until age 65. If an executive dies during active service, the executive's beneficiary is entitled to the Normal Retirement Benefit. The executive can become fully vested in the Accrual Balance upon termination of employment following a disability or a change in control of the Bank. For purposes of the Plan, "Accrual Balance" means the liability that should be accrued by the Corporation for the Corporation's obligation to the executive under the Plan. For purposes of calculating the Accrual Balance, the discount rate in effect at June 30, 2009 was 6.0%. The accrued liability for the salary continuation plan was \$857 as of June 30, 2009 and \$874 as of June 30, 2008. For the years ended June 30, 2009 and 2008, approximately \$4 and \$169, respectively, have been charged to expense in connection with the Plan. The salary continuation benefit accrual and expense for fiscal 2009 was reduced by approximately \$140 as a result of the departure of the previous chief executive officer.

NOTE 10—INCOME TAXES

The provision for income taxes consists of the following for the years ended June 30:

	<u>2009</u>	<u>2008</u>
Current income taxes	\$ 674	\$ 619
Deferred income taxes (benefits)	(105)	(126)
	<u>\$ 569</u>	<u>\$ 493</u>

The net deferred income tax asset consists of the following components at June 30:

	<u>2009</u>	<u>2008</u>
Deferred tax assets:		
Allowance for loan losses	\$ 514	\$ 406
Deferred compensation	310	341
Net unrealized securities losses	—	344
Intangibles	100	89
OREO deferred gain	20	—
Nonaccrual loan interest income	30	—
Gross deferred tax asset	<u>974</u>	<u>1,180</u>
Deferred tax liabilities:		
Depreciation	(166)	(152)
Loan fees	(162)	(158)
Prepaid expenses	(81)	(70)
FHLB stock dividends	(165)	(161)
Net unrealized securities gain	(4)	—
Gross deferred tax liabilities	<u>(578)</u>	<u>(541)</u>
Net deferred asset	<u>\$ 396</u>	<u>\$ 639</u>

CONSUMERS BANCORP, INC.
NOTES TO CONSOLIDATED FINANCIAL STATEMENTS—(continued)
June 30, 2009 and 2008
(Dollar amounts in thousands, except per share data)

The difference between the provision for income taxes and amounts computed by applying the statutory income tax rate of 34% to statutory income before taxes consists of the following for the years ended June 30:

	2009	2008
Income taxes computed at the statutory rate on pretax income	\$ 883	\$ 781
Tax exempt income	(266)	(241)
Cash surrender value income.....	(58)	(55)
Other.....	10	8
	\$ 569	\$ 493

At June 30, 2008 and June 30, 2009, the Corporation had no FIN 48 unrecognized tax benefits recorded. The Corporation does not expect the total amount of unrecognized tax benefits to significantly increase within the next twelve months.

The Corporation and the Bank are subject to U.S. federal income tax as an income-based tax and a capital-based franchise tax, respectively, in the state of Ohio. The Corporation and the Bank are no longer subject to examination by taxing authorities for years before 2005.

NOTE 11—REGULATORY MATTERS

The Bank is subject to regulatory capital requirements administered by federal banking agencies. Capital adequacy guidelines and prompt corrective-action regulations involve quantitative measures of assets, liabilities, and certain off-balance-sheet items calculated under regulatory accounting practices. Capital amounts and classifications are also subject to qualitative judgments by regulators about components, risk weightings, and other factors and the regulators can lower classifications in certain cases. Failure to meet various capital requirements can initiate regulatory action that could have a direct material effect on the financial statements. Management believes as of June 30, 2009, the Bank has met all capital adequacy requirements to which it is subject.

The prompt corrective action regulations provide five classifications, including well capitalized, adequately capitalized, undercapitalized, significantly undercapitalized, and critically undercapitalized, although these terms are not used to represent overall financial condition. If adequately capitalized, regulatory approval is required to accept brokered deposits. If undercapitalized, capital distributions are limited, as is asset growth and expansion, and plans for capital restoration are required.

As of fiscal year-end 2009, the Corporation met the definition of a small bank holding company and, therefore, was exempt from consolidated risk-based and leverage capital adequacy guidelines for bank holding companies. At year-end 2009 and 2008, actual Bank capital levels (in millions) and minimum required levels were as follows:

	Actual		Minimum Required For Capital Adequacy Purposes		Minimum Required To Be Well Capitalized Under Prompt Corrective Action Regulations	
	Amount	Ratio	Amount	Ratio	Amount	Ratio
June 30, 2009						
Total capital (to risk weighted assets)						
Bank.....	\$ 22.9	12.7%	\$ 14.4	8.0%	\$ 18.0	10.0%
Tier 1 capital (to risk weighted assets)						
Bank.....	18.9	10.5	7.2	4.0	10.8	6.0
Tier 1 capital (to average assets)						
Bank.....	18.9	7.6	9.9	4.0	12.4	5.0
June 30, 2008						
Total capital (to risk weighted assets)						
Bank.....	\$ 21.2	12.7%	\$ 13.3	8.0%	\$ 16.6	10.0%
Tier 1 capital (to risk weighted assets)						
Bank.....	17.5	10.5	6.7	4.0	10.0	6.0
Tier 1 capital (to average assets)						
Bank.....	17.5	7.7	9.0	4.0	11.3	5.0

CONSUMERS BANCORP, INC.
NOTES TO CONSOLIDATED FINANCIAL STATEMENTS—(continued)
June 30, 2009 and 2008
(Dollar amounts in thousands, except per share data)

As of the latest regulatory examination, the Bank was categorized as well capitalized. There are no conditions or events since that examination that management believes may have changed the Bank's category.

The Corporation's principal source of funds for dividend payment is dividends received from the Bank. Banking regulations limit the amount of dividends that may be paid without prior approval of regulatory agencies. Under these regulations, the amount of dividends that may be paid in any calendar year is limited to the current year's net profits, combined with the retained net profits of the preceding two years, subject to the capital requirements described above. As of June 30, 2009 the Bank could, without prior approval, declare a dividend of approximately \$1,925.

NOTE 12—COMMITMENTS WITH OFF-BALANCE SHEET RISK

The Bank is a party to commitments to extend credit in the normal course of business to meet the financing needs of its customers. Commitments are agreements to lend to customers providing there are no violations of any condition established in the contract. Commitments to extend credit have a fixed expiration date or other termination clause. These instruments involve elements of credit and interest rate risk more than the amount recognized in the statements of financial position. The Bank uses the same credit policies in making commitments to extend credit as it does for on-balance sheet instruments.

The Bank evaluates each customer's credit on a case by case basis. The amount of collateral obtained is based on management's credit evaluation of the customer. The amount of commitments to extend credit and the exposure to credit loss for non-performance by the customer was \$25,350 and \$23,545 as of June 30, 2009 and 2008, respectively. Of the June 30, 2009 commitments, \$21,737 carried variable rates of interest ranging from 2.00% to 10.00% and \$3,613 carried fixed rates of interest ranging from 3.25% to 8.00%. Of the June 30, 2008 commitments, \$21,656 carried variable rates of interest ranging from 3.75% to 10.00% and \$1,889 carried fixed rates of interest ranging from 4.00% to 7.75%. Financial standby letters of credit were \$498 and \$1,218 as of June 30, 2009 and 2008, respectively. In addition, commitments to extend credit of \$6,253 and \$6,288 as of June 30, 2009 and 2008, respectively, were available to checking account customers related to the overdraft protection program. Since some loan commitments expire without being used, the amount does not necessarily represent future cash commitments.

During 2008 the Bank contracted with a new regional electronic funds transfer processor and a data service provider. For the 2009 fiscal year, the total amount of expense associated with these contracts was approximately \$801 and is expected to be a comparable amount through the end of the contracts.

CONSUMERS BANCORP, INC.
NOTES TO CONSOLIDATED FINANCIAL STATEMENTS—(continued)

June 30, 2009 and 2008

(Dollar amounts in thousands, except per share data)

NOTE 13—FAIR VALUE DISCLOSURES OF FINANCIAL INSTRUMENTS

As discussed in Note 1 - Summary of Significant Accounting Policies, the Corporation adopted fair value accounting standard Statement No. 157 effective July 1, 2008. Statement No. 157 defines fair value as the exchange price that would be received for an asset or paid to transfer a liability (an exit price) in the principal or most advantageous market for the asset or liability in an orderly transaction between market participants on the measurement date. Statement No. 157 also establishes a fair value hierarchy which requires an entity to maximize the use of observable inputs and minimize the use of unobservable inputs when measuring fair value. The standard describes three levels of inputs that may be used to measure fair value:

Level 1: Quoted prices (unadjusted) for identical assets or liabilities in active markets that the entity has the ability to access as of the measurement date.

Level 2: Significant other observable inputs other than Level 1 prices such as quoted prices for similar assets or liabilities; quoted prices in markets that are not active; or other inputs that are observable or can be corroborated by observable market data.

Level 3: Significant unobservable inputs that reflect a company's own assumptions about the assumptions that market participants would use in pricing an asset or liability. Valuation techniques include use of discounted cash flow models and similar techniques.

The Corporation used the following methods and significant assumptions to estimate the fair value of items:

Securities: When available, the fair values of available-for-sale securities are determined by obtaining quoted prices on nationally recognized securities exchanges (Level 1 inputs). If quoted market prices are not available, fair values are estimated using matrix pricing, which is a mathematical technique widely used in the industry to value debt securities without relying exclusively on quoted prices for the specific securities, but rather by relying on the securities' relationship to other benchmark quoted securities (Level 2 inputs). In certain cases where there is limited activity or less transparency around inputs to the valuation, fair values are estimated using a discounted cash flow model and market liquidity premium (Level 3 inputs). With the current market conditions, the assumptions used to determine the fair value of Level 3 securities have greater subjectivity due to the lack of observable market transactions. Observable inputs for the Corporation's trust preferred security and this class of investment have declined which has resulted in unreliable external pricing.

Federal bank and other restricted stocks includes stock acquired for regulatory purposes, such as Federal Home Loan Bank stock and Federal Reserve Bank stock that are accounted for at cost due to restrictions placed on their transferability; and therefore, are not subject to the fair value disclosure requirements of Statement No. 157.

Assets and Liabilities Measured on a Recurring Basis

Assets and liabilities measured at fair value on a recurring basis are summarized below:

	Balance at June 30, 2009	Fair Value Measurements at June 30, 2009 Using		
		Level 1	Level 2	Level 3
Assets:				
Obligations of government sponsored entities	\$ 14,662	\$ —	\$ 14,662	\$ —
Obligations of states and political subdivisions	17,625	—	17,625	—
Mortgage-backed securities - residential	28,132	—	28,132	—
Trust preferred security	356	—	—	356

CONSUMERS BANCORP, INC.
NOTES TO CONSOLIDATED FINANCIAL STATEMENTS—(continued)
June 30, 2009 and 2008

(Dollar amounts in thousands, except per share data)

The following table presents a reconciliation of assets measured at fair value on a recurring basis using significant unobservable inputs (Level 3) for the year ended June 30, 2009:

	Fair Value Measurements Using Significant Unobservable Inputs (Level 3)
Beginning balance, July 1, 2008	\$ 741
Change in fair value included in other comprehensive income	(385)
Ending balance, June 30, 2009	\$ 356

Assets and Liabilities Measured on a Non-Recurring Basis

Certain assets and liabilities may be required to be measured at fair value on a nonrecurring basis in periods subsequent to their initial recognition. Generally, nonrecurring valuation is the result of the application of other accounting pronouncements which require assets and liabilities to be assessed for impairment or recorded at the lower of cost or fair value.

Impaired loans are generally measured for impairment using the fair value of the collateral supporting the loan. Evaluating impaired loan collateral is based on level 3 inputs utilizing outside appraisals adjusted by management for sales costs and other assumptions regarding market conditions to arrive at fair value. As of June 30, 2009, impaired loans with a fair value of \$1,887 had a principal balance of \$2,231, with a valuation allowance of \$344; resulting in an additional provision for loan losses of \$295 being recorded for the twelve month period ended June 30, 2009.

Fair Value of Financial Instruments

The following table shows the estimated fair value at June 30, 2009 and 2008, and the related carrying value of financial instruments:

	2009		2008	
	Carrying Amount	Estimated Fair Value	Carrying Amount	Estimated Fair Value
Financial Assets:				
Cash and cash equivalents	\$ 18,891	\$ 18,891	\$ 10,962	\$ 10,962
Certificates of deposits in other financial institutions	2,012	2,012	—	—
Securities available-for-sale	60,775	60,775	59,212	59,212
Loans, net	158,149	154,542	150,641	148,933
Accrued interest receivable	1,038	1,038	1,082	1,082
Financial Liabilities:				
Demand and savings deposits	(113,621)	(113,621)	(110,268)	(110,268)
Time deposits	(90,430)	(91,593)	(78,576)	(79,026)
Short-term borrowings	(15,055)	(15,055)	(11,892)	(11,892)
Federal Home Loan Bank advances	(9,373)	(9,841)	(10,601)	(9,615)
Accrued interest payable	(184)	(184)	(256)	(256)

For purposes of the above disclosures of estimated fair value, the following assumptions were used. Estimated fair value for cash and cash equivalents, accrued interest receivable and payable, demand and savings deposits and short term borrowings were considered to approximate carrying value for instruments that reprice frequently and fully. Fair value for loans was estimated for portfolios of loans with similar financial characteristics. For adjustable rate loans that reprice at least annually and for fixed rate commercial loans with maturities of six months or less which possess normal risk characteristics, carrying value was determined to be fair value. Fair value of other types of loans (including adjustable rate loans which reprice less frequently than annually and fixed rate term loans or loans which possess higher risk characteristics) was estimated by discounting future cash flows using the current rates at which similar loans would be made to borrowers with similar credit ratings and for similar anticipated maturities. Fair value for impaired loans was based on recent appraisals of the collateral or, if appropriate, using estimated discounted cash flows. The Corporation has not considered market illiquidity in estimating the fair value of loans due to uncertain and inconsistent market pricing being experienced on June 30, 2009.

CONSUMERS BANCORP, INC.
NOTES TO CONSOLIDATED FINANCIAL STATEMENTS—(continued)
June 30, 2009 and 2008
(Dollar amounts in thousands, except per share data)

Fair value of core deposits, including demand deposits, savings accounts and certain money market deposits, was the amount payable on demand. Fair value of fixed-maturity certificates of deposit was estimated using the rates offered at June 30, 2009 and 2008, for deposits of similar remaining maturities. Estimated fair value does not include the benefit that result from low-cost funding provided by the deposit liabilities compared to the cost of borrowing funds in the market. Fair value of short-term borrowings and accrued interest was determined to be the carrying amounts since these financial instruments generally represent obligations that are due on demand. Fair value of Federal Home Loan Bank advances was estimated using current rates at June 30, 2009 and 2008 for similar financing. The fair value of unrecorded commitments at June 30, 2009 and 2008 was not material.

NOTE 14—PARENT COMPANY FINANCIAL STATEMENTS

Condensed financial information of Consumers Bancorp. Inc. (parent company only) follows:

	<u>June 30,</u> <u>2009</u>	<u>June 30,</u> <u>2008</u>
Condensed Balance Sheets		
Assets		
Cash	\$ 126	\$ 177
Subordinated debenture receivable from subsidiary	2,000	2,000
Other assets	98	97
Investment in subsidiary	19,285	17,368
Total assets	<u>\$ 21,509</u>	<u>\$ 19,642</u>
Liabilities		
Other liabilities.....	\$ 48	\$ 71
Shareholders' equity	21,461	19,571
Total liabilities & shareholders' equity	<u>\$ 21,509</u>	<u>\$ 19,642</u>
	<u>Year Ended</u> <u>June 30, 2009</u>	<u>Year Ended</u> <u>June 30, 2008</u>
Condensed Statements of Income		
Cash dividends from subsidiary	\$ 800	\$ 1,305
Other income	160	160
Other expense	177	139
Income before income taxes and equity in undistributed net income of subsidiary....	783	1,326
Income tax expense (benefit)	(2)	11
Income before equity in undistributed net income of subsidiary	785	1,315
Equity in undistributed net income of subsidiary	1,242	488
Net income	<u>\$ 2,027</u>	<u>\$ 1,803</u>

CONSUMERS BANCORP, INC.
NOTES TO CONSOLIDATED FINANCIAL STATEMENTS—(continued)
June 30, 2009 and 2008
(Dollar amounts in thousands, except per share data)

	<u>Year Ended June 30, 2009</u>	<u>Year Ended June 30, 2008</u>
Condensed Statements of Cash Flows		
Cash flows from operating activities		
Net income	\$2,027	\$1,803
Equity in undistributed net income of Bank subsidiary	(1,242)	(488)
Change in other assets and liabilities	(19)	(52)
Net cash flows from operating activities	<u>766</u>	<u>1,263</u>
Cash flows from investing activities		
Acquisition of premises and equipment	(5)	—
Net cash flows from investing activities	<u>(5)</u>	<u>—</u>
Cash flows from financing activities		
Dividend paid	(812)	(694)
Purchase of treasury stock	—	(424)
Net cash used by financing activities	<u>(812)</u>	<u>(1,118)</u>
Change in cash and cash equivalents	(51)	145
Cash and cash equivalents, beginning of year	177	32
Cash and cash equivalents, end of year	<u>\$ 126</u>	<u>\$ 177</u>

NOTE 15—OTHER COMPREHENSIVE INCOME

	<u>2009</u>	<u>2008</u>
Unrealized holding gains on available-for-sale securities	\$ 1,207	\$ 183
Less reclassification adjustments for gains later recognized in income	(185)	(26)
Net unrealized gains	<u>1,022</u>	<u>157</u>
Tax effect	347	53
Other comprehensive income	<u>\$ 675</u>	<u>\$ 104</u>

NOTE 16—QUARTERLY FINANCIAL DATA (Unaudited)

	<u>Interest Income</u>	<u>Net Interest Income</u>	<u>Net Income</u>	<u>Earnings per Share-Basic and Diluted</u>
2009				
First Quarter	\$ 3,442	\$ 2,473	\$570	\$0.28
Second Quarter	3,358	2,414	526	0.26
Third Quarter	3,135	2,280	481	0.24
Fourth Quarter	3,165	2,380	450	0.22
2008				
First Quarter	\$ 3,258	\$ 2,150	\$440	\$0.21
Second Quarter	3,394	2,171	476	0.23
Third Quarter	3,472	2,224	422	0.21
Fourth Quarter	3,354	2,305	465	0.23

CONSUMERS BANCORP, INC.
NOTES TO CONSOLIDATED FINANCIAL STATEMENTS—(continued)
June 30, 2009 and 2008
(Dollar amounts in thousands, except per share data)

ITEM 9—CHANGES IN AND DISAGREEMENTS WITH ACCOUNTANTS ON ACCOUNTING AND FINANCIAL DISCLOSURE

None.

ITEM 9A(T)—CONTROLS AND PROCEDURES

The management of the Corporation is responsible for establishing and maintaining effective disclosure controls and procedures, as defined under Rule 13a-15(e) of the Securities Exchange Act of 1934. As of June 30, 2009, an evaluation was performed under the supervision and with the participation of management, including the Chief Executive Officer and Chief Financial Officer, of the effectiveness of the design and operation of the Corporation's disclosure controls and procedures. Based on that evaluation, management concluded that the Corporation's disclosure controls and procedures as of June 30, 2009 were effective in ensuring that information required to be disclosed by the Corporation in the reports that it files or submits under the Act were recorded, processed, summarized and reported within the time period required by the Securities and Exchange Commission's rules and forms and that such information is accumulated and communicated to the management, including the Chief Executive Officer and the Chief Financial Officer, as appropriate to allow timely decisions regarding required disclosure. The Report of Management on the Company's Internal Controls Over Financial Reporting appears page 21.

ITEM 9B—OTHER INFORMATION

None.

PART III

ITEM 10—DIRECTORS, EXECUTIVE OFFICERS AND CORPORATE GOVERNANCE

The information required by this item as to the Corporation's directors and executive officers is set forth in the Corporation's Proxy Statement dated September 23, 2009 under the captions "Election of Directors" on page 2, "Directors and Executive Officers" on pages 5 and 6, "The Board of Directors and its Committees" on pages 7 and 8, "Section 16(a) Beneficial Ownership Reporting Compliance" on page 17, and "Certain Transactions and Relationships" on page 17, and is incorporated herein by reference.

The Corporation's Code of Ethics Policy, which is applicable to all directors, officers and employees of the Corporation, and its Code of Ethics for Principal Financial Officers, which is applicable to the principal executive officer and the principal financial officer, are each available on the Investor Relations section under Required Disclosures of the corporation's website (www.consumersbancorp.com). Copies of either of the Code of Ethics Policies are also available in print to share owners upon request, addressed to the Corporate Secretary at Consumers Bancorp, Inc., 614 East Lincoln Way, Minerva, Ohio 44657. The Corporation intends to post amendments to or waivers from its Code of Ethics on its website.

ITEM 11—EXECUTIVE COMPENSATION

The information required by this item is set forth in the Corporation's Proxy Statement dated September 23, 2009 under the captions "Compensation of Directors" on page 9, "Executive Compensation" on page 12-14, "Defined Contribution Plan" on page 14, "Salary Continuation Program" on page 15, "Change of Control Agreements" on pages 15-16, "Compensation Committee Report" on page 16, and "Compensation Committee Interlock and Insider Participation" on page 16, and is incorporated herein by reference.

ITEM 12—SECURITY OWNERSHIP OF CERTAIN BENEFICIAL OWNERS AND MANAGEMENT AND RELATED STOCKHOLDER MATTERS

The information required by this item is set forth in the Corporation's Proxy Statement dated September 23, 2009 under the caption "Security Ownership of Certain Beneficial Owners and Management" on pages 10-11, and is incorporated herein by reference.

ITEM 13—CERTAIN RELATIONSHIPS AND RELATED TRANSACTIONS, AND DIRECTOR INDEPENDENCE

The information required by this item is set forth in the Corporation's Proxy Statement dated September 23, 2009 under the caption "Certain Transactions and Relationships" on page 17, and is incorporated herein by reference.

ITEM 14—PRINCIPAL ACCOUNTING FEES AND SERVICES

The information required by this item is set forth in the Corporation's Proxy Statement dated September 23, 2009 under the caption "Principal Accountant Fees and Services" on page 18, and is incorporated herein by reference.

PART IV

ITEM 15—EXHIBITS, FINANCIAL STATEMENT SCHEDULES

(a) 1. FINANCIAL STATEMENTS

The consolidated financial statements required in response to this Item are included in Item 8 of this Report.

(a) 2. FINANCIAL STATEMENT SCHEDULES

Not applicable

(a) 3. EXHIBITS

<u>Exhibit Number</u>	<u>Description of Document</u>
3.1	Amended and Restated Articles of Incorporation of the Corporation. Reference is made to Exhibit A to the Definitive Proxy Statement of the Corporation filed September 28, 2000, which exhibit is incorporated herein by reference. Reference is also made to page 5 of the Definitive Proxy Statement of the Corporation filed September 17, 2001 for an amendment to the Amended and Restated Articles of Incorporation to increase the number of Consumers Bancorp, Inc.'s authorized common shares to two million five hundred thousand.
3.2	Amended and Restated Code of Regulations of the Corporation.
4	Form of Certificate of Common Shares. Reference is made to Form 10-KSB of the Corporation filed September 26, 2002, which is incorporated herein by reference.
10.2	Form of Change of Control. Reference is made to Form 10-K of the Corporation filed September 15, 2005, which is incorporated herein by reference.
10.3	Lease Agreement entered into between Furey Holdings, LLC and Consumers National Bank on December 23, 2005. Reference is made to Form 10-Q of the Corporation filed February 14, 2006, which is incorporated herein by reference.
10.4	First Amendment to the Salary Continuation agreement dated March 1, 2005 entered into with Mr. Muckley on November 13, 2007. Reference is made to Form 10-Q of the Corporation filed November 14, 2007, which is incorporated herein by reference.
10.5	Salary Continuation agreement entered into with Mr. Lober on August 29, 2008.
11	Computation of Earnings per Share. Reference is made to this Annual Report on Form 10-K Note 1, page 29, which is incorporated herein by reference.
21	Subsidiaries of Consumers Bancorp, Inc. filed with this Annual Report on Form 10-K.
23	Consent of Crowe Horwath LLP
31.1	Certification of Chief Executive Officer Pursuant to Section 302 of the Sarbanes-Oxley Act of 2002.
31.2	Certification of Chief Financial Officer and Treasurer Pursuant to Section 302 of the Sarbanes-Oxley Act of 2002.
32.1	Certification of Chief Executive Officer and Chief Financial Officer Pursuant to 18 U.S.C. Section 1350, as Adopted Pursuant to Section 906 of the Sarbanes-Oxley Act of 2002.

EXHIBIT INDEX

<u>Exhibit Number</u>	<u>Description of Document</u>
3.1	Amended and Restated Articles of Incorporation of the Corporation. Reference is made to Exhibit A to the Definitive Proxy Statement of the Corporation filed September 28, 2000, which exhibit is incorporated herein by reference. Reference is also made to page 5 of the Definitive Proxy Statement of the Corporation filed September 17, 2001 for an amendment to the Amended and Restated Articles of Incorporation to increase the number of Consumers Bancorp, Inc.'s authorized common shares to two million five hundred thousand.
3.2	Amended and Restated Code of Regulations of the Corporation.
4	Form of Certificate of Common Shares. Reference is made to Form 10-KSB of the Corporation filed September 26, 2002, which is incorporated herein by reference.
10.2	Form of Change of Control. Reference is made to Form 10-K of the Corporation filed September 15, 2005, which is incorporated herein by reference.
10.3	Lease Agreement entered into between Furey Holdings, LLC and Consumers National Bank on December 23, 2005. Reference is made to Form 10-Q of the Corporation filed February 14, 2006, which is incorporated herein by reference.
10.4	First Amendment to the Salary Continuation agreement dated March 1, 2005 entered into with Mr. Muckley on November 13, 2007. Reference is made to Form 10-Q of the Corporation filed November 14, 2007, which is incorporated herein by reference.
10.5	Salary Continuation agreement entered into with Mr. Lober on August 29, 2008.
11	Computation of Earnings per Share. Reference is made to this Annual Report on Form 10-K Note 1, page 29, which is incorporated herein by reference.
21	Subsidiaries of Consumers Bancorp, Inc. Filed with this Annual Report on Form 10-K.
23	Consent of Crowe Horwath LLP
31.1	Certification of Chief Executive Officer Pursuant to Section 302 of the Sarbanes-Oxley Act of 2002.
31.2	Certification of Chief Financial Officer and Treasurer Pursuant to Section 302 of the Sarbanes-Oxley Act of 2002.
32.1	Certification of Chief Executive Officer and Chief Financial Officer Pursuant to 18 U.S.C. Section 1350, as Adopted Pursuant to Section 906 of the Sarbanes-Oxley Act of 2002.

[THIS PAGE INTENTIONALLY LEFT BLANK]

[THIS PAGE INTENTIONALLY LEFT BLANK]

General Information

External Independent Certified Public Accountants

Crowe Horwath LLP
5900 Landerbrook Drive, Suite 205
Cleveland, Ohio 44124

General Counsel

Squire, Sanders & Dempsey LLP
4900 Key Tower
127 Public Square
Cleveland, Ohio 44114

Stock Transfer Agent and Registrar

Registrar and Transfer Company
10 Commerce Drive
Cranford, New Jersey 07016-3572
1-800-368-5948

Market Makers

Mr. Greig McDonald
Community Banc Investments, Inc.
26 East Main Street
New Concord, Ohio 43762
740-826-7601
1-800-224-1013

Mr. Rob McCulloch
Janney Montgomery Scott LLC
340 East State Street
Salem, Ohio 44460
330-337-7801
1-800-624-1965

Mr. George E. Geissbuhler
Sweney Cartwright & Co.
17 S. High Street, Suite 300
Columbus, Ohio 43215
614-228-5391
1-800-334-7481

Common Stock Listing

Consumers Bancorp, Inc. common stock trades on the OTC Bulletin Board under the symbol CBKM.OB. As of June 30, 2009, there were 2,029,558 shares outstanding with 679 shareholders of record and an estimated 281 additional beneficial holders whose stock was held in nominee name.

Dividend Reinvestment and Stock Purchase Plan

Existing holders of common stock may elect to have all or a portion of cash dividends automatically invested in additional shares of common stock without payment of any brokerage or service charge. Additionally, shareholders may elect to purchase shares of common stock with optional cash payments of \$100 to \$5,000 per quarter without payment of any brokerage commission or service charge. Shareholders should contact Registrar and Transfer Company to execute these convenient options.

Dividend Payments

Subject to the approval of the Board of Directors, quarterly cash dividends are typically paid on or about the 15th day of September, December, March, and June.

Direct Deposit of Cash Dividends

Shareholders may elect to have their cash dividends deposited directly into their savings or checking account. Shareholders should contact Registrar and Transfer Company to execute this convenient option.

Shareholder Relations

shareholderrelations@consumersbank.com

Website

www.consumersbank.com

Annual Meeting

The 2009 annual meeting of shareholders will be held on Wednesday, October 28, 2009, at 9:00 a.m. at the Great Trail Tee House, 10154 Great Trail Drive, Minerva, Ohio.

Annual Report on Form 10-K

A copy of the Company's Annual Report on Form 10-K for the fiscal year ended June 30, 2009, as filed with the Securities and Exchange Commission, will be furnished without charge to shareholders upon written request to Theresa J. Linder, Corporate Secretary.



Our Neighborhood Locations

ALLIANCE

610 W. State Street
330-823-8178

CARROLLTON

1017 Canton Road NW
330-627-3523

EAST CANTON

440 W. Noble Street
330-488-0577

HANOVERTON

30034 Canal Street
330-223-1534

LISBON

7985 Dickey Drive
330-424-7271

LOUISVILLE

1111 N. Chapel Street
330-875-4349

MALVERN

4070 Alliance Road NW
330-863-2641

MINERVA

614 E. Lincoln Way
330-868-7701

SALEM

141 S. Ellsworth Avenue
330-332-0377

WAYNESBURG

8607 Waynesburg Drive SE
330-866-5557

